

DESIGNED TO **INSPIRE.**



THE DESIGNED EXTERIOR

Whether the reasons are functional or aesthetic, making updates to your existing home exterior is inevitable. Through *The Designed Exterior™* by Ply Gem you can beautifully transform the look of your house with low maintenance materials that will allow you to spend time enjoying your home instead of fixing it.





DESIGNED TO WORK TOGETHER.

For more than 65 years, Professionals and home-owners alike have trusted Ply Gem as one of the leading building products manufacturer. Continuing that legacy, we partnered with one of the nation's foremost national architectural firms to develop our *Designed Exteriors*. Product combinations and color palettes have been carefully conceived to bring each style to life. The result is a complete exterior solution that's cost-effective to build and beautiful to behold. Backed by a single company that's been serving the building industry for generations.



REALIZING YOUR VISION.



THE DESIGNED EXTERIOR

the **BEFORE**

With *The Designed Exterior*, you can update an existing style or completely change the character of your home with a new one. Either way, you'll have a low-maintenance exterior that boosts the value and curb appeal of your home.

the **COLLECTIONS**

The right mix of textures, colors and architectural detail creates a harmonious design. The color schemes and material combinations in our Collections have been created by architects to enhance the style of each *Designed Exterior*. Use them to guide, not limit your design choices. Feel free to mix and match homes and collections.



the **REFRESH**

You don't have to change the shape of your home to give it a whole new look. Simply resurfacing your home with a mix of styles, textures and materials can produce dramatic results. New windows are a major architectural feature and provide increased comfort and savings. While shutters, trim and accessories can add personality and charm.



the **ENHANCE**

You can enhance your exterior design, boost curb appeal and add value to your home by making simple modifications to the form of your house. A front porch or gable, for example, can give your home a dramatic facelift.



EXPLORE THE POSSIBILITIES.



This Field Guide showcases a range of traditional and contemporary exterior design styles. The looks were selected in partnership with a leading national architectural firm and represent today's most popular exteriors. Product specifications and recommended color schemes are provided for each architectural style. Use them to guide your design choices, achieve an authentic look and give your home greater curb appeal.



SINGLE-STORY HOMES

PAGES 10-27



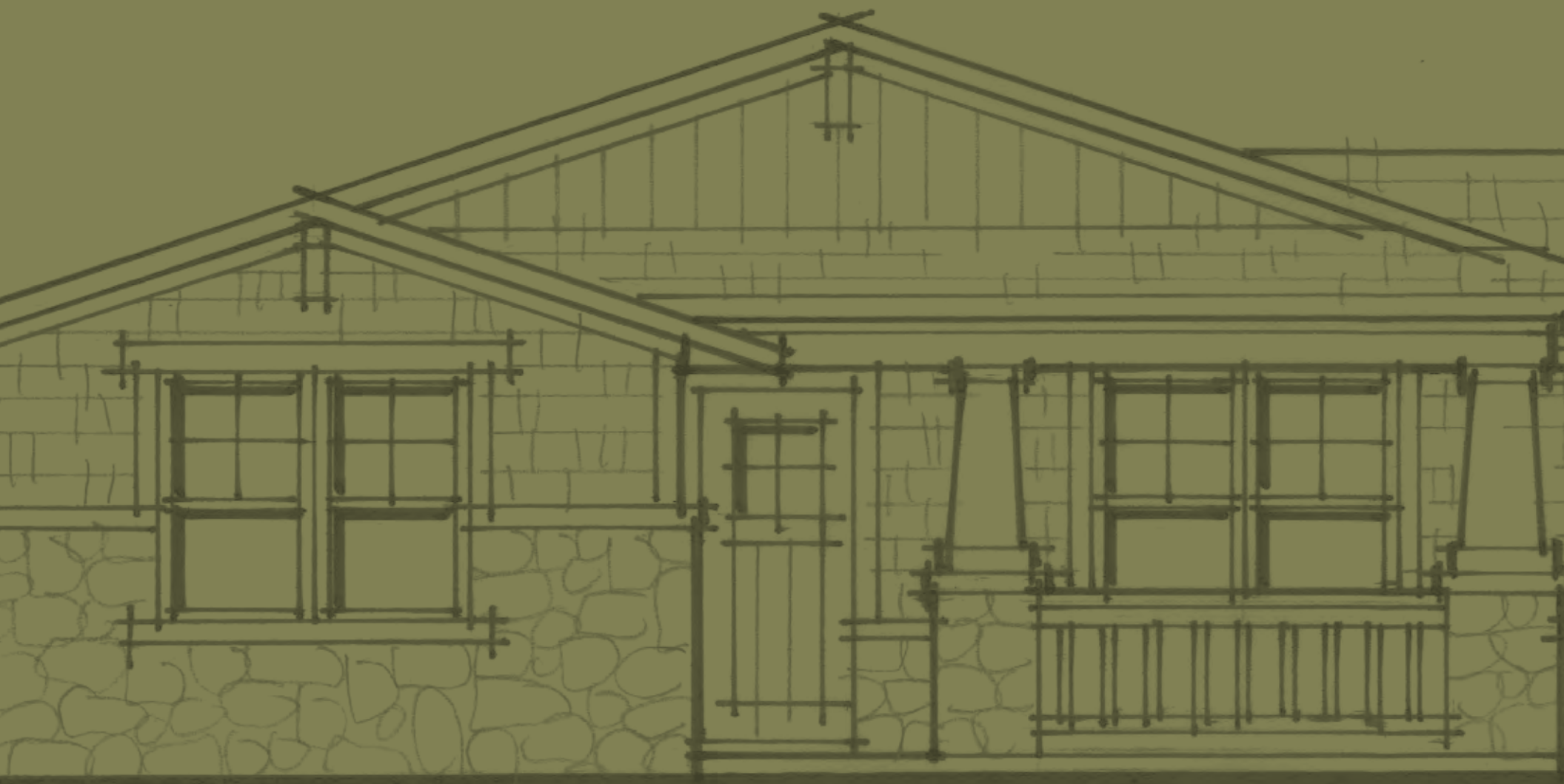
SPLIT LEVEL HOMES

PAGES 28-41



TWO-STORY HOMES

PAGES 42-59



SINGLE-STORY — HOMES —

Single-story - or more commonly referred to as - ranch-style houses are widely preferred by homeowners because of their ease of accessibility. Unfortunately, it's all too common that these houses lack individuality and character.

However, The *Designed Exterior* by Ply Gem helps to inspire beautifully-updated, low maintenance home exteriors by combining windows, stone veneer, siding profiles and colors, along with other accents that are intended to give any home a fresh and dramatically customized look.

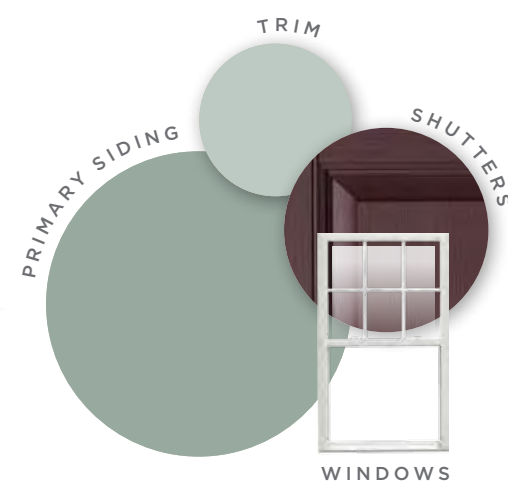


This simple, Cape Cod cottage-style home has good proportions but is short on detail – the windows lack grids, its shutters are undersized and its porch columns are too thin.



Adding color – inspired by the architecture itself – makes a dramatic impact. Right-sized shutters, the updated six-over-one window pattern and new – more substantial – porch columns deliver an exceptional look.

The FERN COLLECTION



A mix of colors and textures completely transform this once, forgettable-looking home into an enviable Craftsman. Single windows with shutters were replaced by double windows with an authentic 3-over-1 grill pattern. A Shadow LedgeStone along the base and porch ground the house.

The HILLTOP COLLECTION



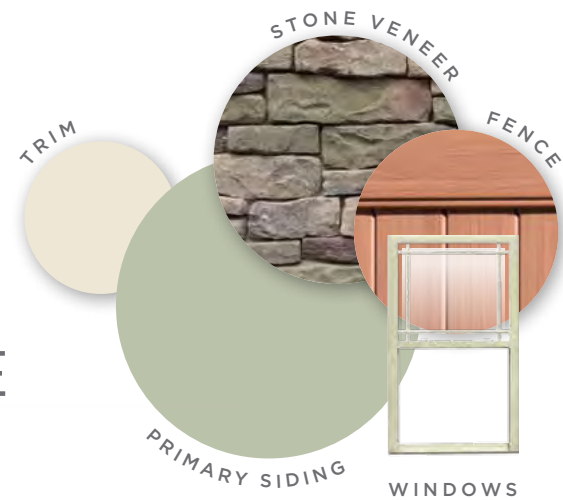
HOME
2

REMODELING FIELD GUIDE

This typical Midwestern house lacks fine points and could be considered a watered-down Prairie style. Its windows are ordinary, colors are dull and the entryway is especially weak.



This home's existing style received a boost by updating the color and texture. Its plain windows were exchanged with a Prairie window pattern in the upper sash, the existing brick was replaced with Shadow Ledge stone and the small front porch was strengthened by adding a column.

The RIVERSTONE
COLLECTION

REFRESH



ENHANCE

The improved version of this Prairie style home includes strong horizontal lines paired with clusters of casement windows. A front porch with massive square piers was added to give the house a bold entrance.

The UNIVERSITY
COLLECTION

Refer to the inside back cover for product specs.

HOME
3

REMODELING FIELD GUIDE

This home displays some typical architectural missteps. Shutters should be sized to function – in other words, be able to close over the entire window. Picture and corner windows were never intended to have shutters. Often times this was an attempt to add animation and color to an otherwise plain house.



BEFORE

In order to bring visual interest to this home, two different siding colors were chosen. The siding on the lower portion of the home is darker and wider - a technique referred to as “rusticated.” In addition, double hung windows were replaced by casements with the Prairie pattern.

TRIM

PRIMARY SIDING

SECONDARY SIDING

WINDOWS

The **SANTA FE**
COLLECTION



ENHANCE

This house lacked the celebration of entry. A front porch and roof gable were added - delivering the Craftsman style, which pairs well with the existing low pitched roof and completely changes the appearance of the home. By altering window styles and placement, varying siding materials - shakes and board and batten and adding columned piers along with stone at the base, this home now appears architecturally authentic.

TRIM

PRIMARY SIDING

SECONDARY SIDING

STONE VENEER

RAIL

WINDOWS

The **REED**
COLLECTION

REFRESH



Refer to the inside back cover for product specs.

SINGLE-STORY HOME 3

17



BEFORE

This house is a textbook example of what commonly happens when a homeowner chooses to convert a garage into living space.

By simply using a mix of siding styles this home can add warmth and texture – giving the home a fresh, cohesive look. A new four-over-one window pattern also added character and style to this once sparse-looking house.

The STRAW

COLLECTION



REFRESH

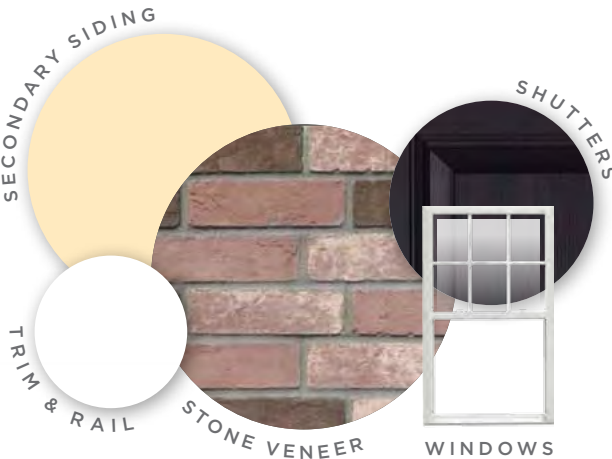


ENHANCE

Given a little more budget, a dignified, Colonial Revival is possible. Cultured brick and a porch with a roof gives the home an entirely new look. A triple window with a six-over-one pattern replaces the original picture window and completes the steps necessary to make this house a classic.

The WASHINGTON

COLLECTION



Refer to the inside back cover for product specs.

HOME
6

REMODELING FIELD GUIDE

The intended style of this house is lost because its primary elements - arched beams, enormous roof and hidden brick - lack consistency.



The combination of roof dormers, new - more prominent - front porch columns and brick wainscoting allows this house to embrace a Colonial Revival architectural style. By eliminating the arched beams and giving it a strong, dignified line, the front porch makes a statement.

The LINCOLN
COLLECTION



REFRESH



ENHANCE

This house was transformed into traditional Craftsman style by first framing a gable and portico atop the overbearing roof, then completed by adding stone, shakes and front porch pillars.

The REDWOOD
COLLECTION



Refer to the inside back cover for product specs.



This 70s style house is drab with unadorned windows and a front section that projects yet has no windows or other design elements.



Without changing the structure, but by adding classic louvered vents, two siding types and stone along its base, this house was given a chic new look.

The FAWN COLLECTION



The addition of a porch and framed gable on top of the original roof provides balance and makes the windowless element irrelevant. Yet it's the red shakes and Shadow LedgeStone that completely change this house into a Craftsman.

The VISTA COLLECTION





SPLIT LEVEL HOMES

Split level construction was a trend that dominated new home creation throughout the 1960-70s. Yet, unfortunately, more often than not, it lacked any sense of traditional residential architecture. Ply Gem has taken this challenge to heart and suggests that by adding a combination of materials, colors and textures, these once out-dated home exteriors can become customized architectural looks



This example reveals one of the typical challenges found in split levels: it looks like two houses-- a single story and a two story-- pressed together. The pale, monotone color scheme is boring and without a front porch, there's no defined point of entry.



Removing its ill-fitted shutters and blending a trio of siding profiles with warm colors, the look of this house is unified.

The EMBER COLLECTION



A gabled porch provides a grand entry point and unites the two levels together. Stone, along with single hung windows, right-sized shutters and other accents give this home a Shingle-style appeal.

The BUCKSKIN COLLECTION



Refer to the inside back cover for product specs.

HOME
10

REMODELING FIELD GUIDE

The garage door on this 70s-style house demands attention; while the combination of inconsistent detail elements prevent it from claiming a true style.



BEFORE

Adjusting siding profiles and adding a stone entrance column offsets the large garage door and brings balance to the look of this house. Additionally, Prairie style window grids deliver architectural authenticity.

The

STUDIO

COLLECTION

SECONDARY SIDING

STONE VENEER

TRIM

PRIMARY SIDING

WINDOWS



ENHANCE

A hip roof is added to extend a new stone porch in front of the garage. The updated windows with thinner casements create a vertical contrast to the horizontal lines of the house.

The

MEADOWBROOK

COLLECTION

TRIM

PRIMARY STONE VENEER

PRIMARY SIDING

WINDOWS

Refer to the inside back cover for product specs.

SPLIT-LEVEL HOME 10

33

HOME
12

REMODELING FIELD GUIDE

This colorless house looks outdated with its iron work columns, painted brick and window “wings.”



BEFORE

By adding substantial front porch columns, updating the windows with grids and incorporating brick with color, a Colonial-style exterior was created.

The **QUEEN ANNE**
COLLECTION





ENHANCE

Coordinated roof and front porch gables work well together and team up beautifully with the stone and siding profiles to transform this house into a Craftsman.

The **SUNSET**
COLLECTION



Refer to the inside back cover for product specs.

SPLIT-LEVEL HOME 12

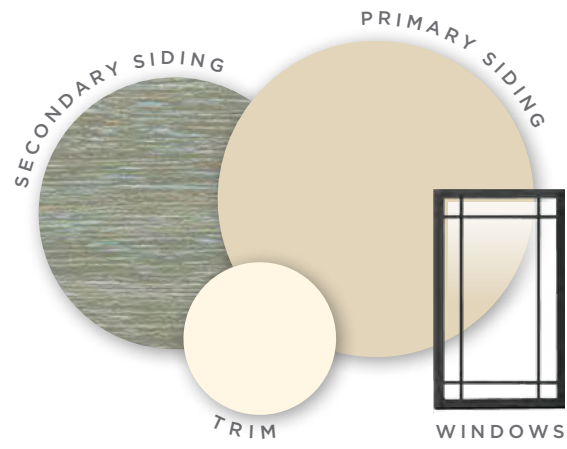
37

This monochromatic “challenge” with plain windows and no sense of entry, lacks balance - overwhelmed by the garage and its gables.



Two different siding profiles give this house a high-quality look while the addition of black windows with prairie grids enhances its character.

The ELKHORN
COLLECTION



REFRESH



ENHANCE

The overall look of this home is unified by complementing stone and siding color. While adding a front porch with formidable columns make this house appear far more welcoming.

The PINE
COLLECTION



Refer to the inside back cover for product specs.

HOME
14

REMODELING FIELD GUIDE

While it lacks discernable style and detail, the primary challenge with this home is the scale and balance of its components – such as the disproportionately large half-round window.



Simply adding accessory details to the gables and mixing siding styles assigns character and helps this newly-created Victorian exterior to extend a warm welcome to guests.

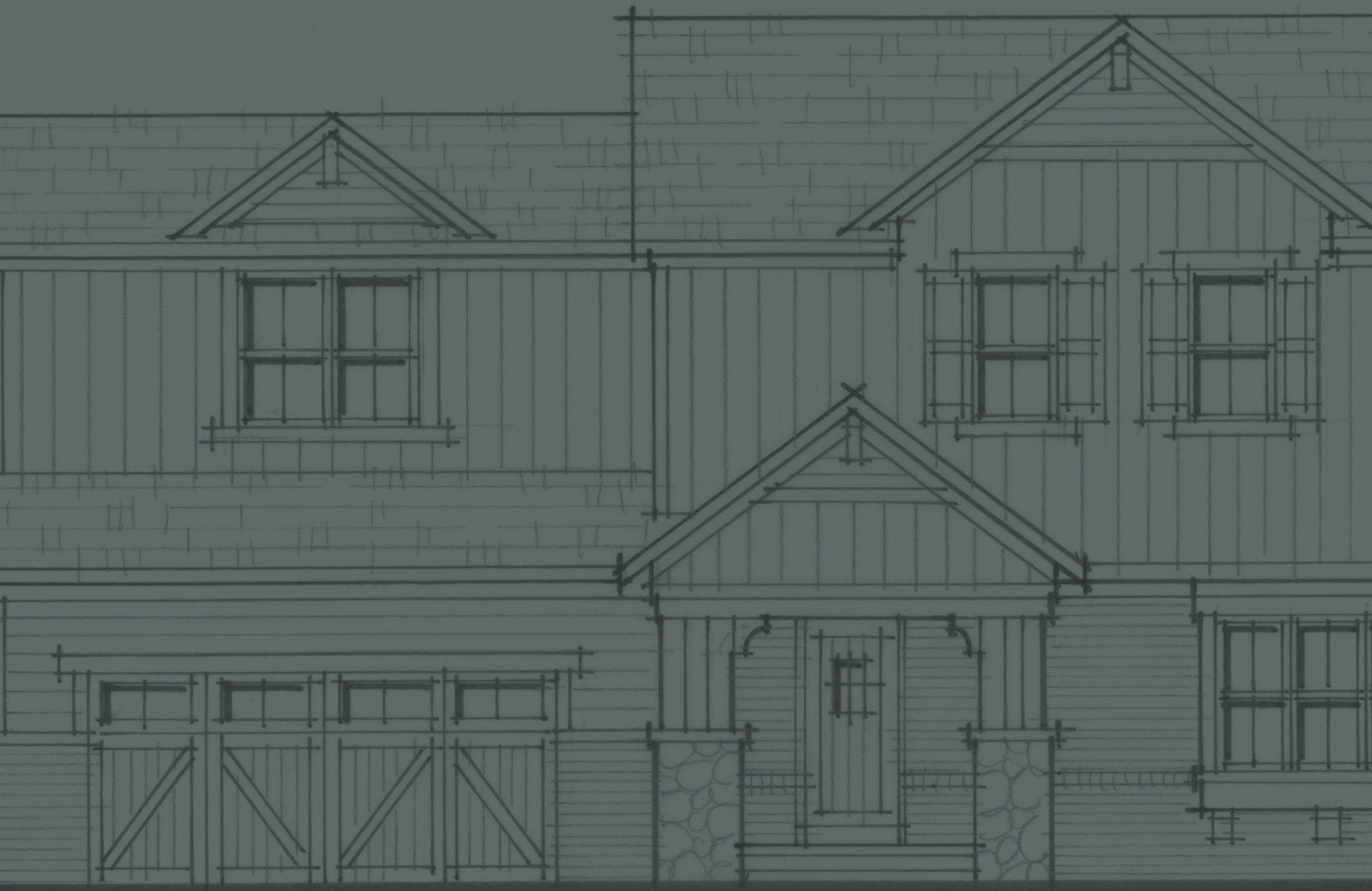
The **SOHO**
COLLECTION



Creating this French Country look started with new windows, then is further stylized by reducing the scale of the gables and utilizing two siding different siding profiles - shakes and board and batten.

The **LODGE**
COLLECTION





THE DESIGNED EXTERIOR

TWO-STORY HOMES

The interior space available in a two-story home allows families the room they need to comfortably spread out. Yet, all too often what works well inside the house, presents homeowners with exterior design and curb appeal challenges.

Ply Gem makes it possible for you to explore the possibilities and create a home exterior that will be the envy of the neighborhood.



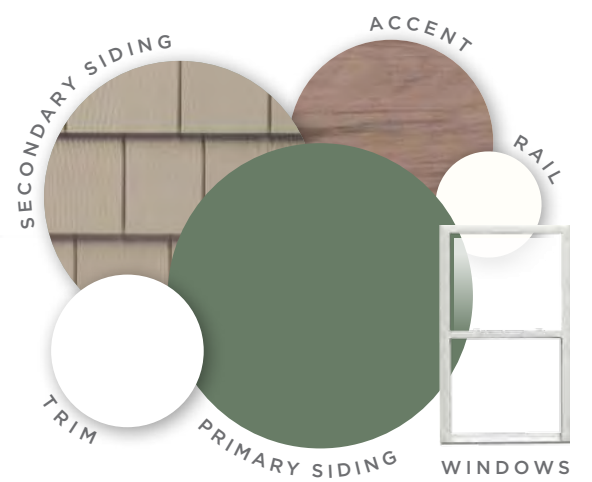


This charming house, with its friendly front porch, is bursting with potential but lacks the style and color to make it stand out in the neighborhood.



Minor changes to just the color and texture show the impact that a material change can have on the personality and look of a house.

The SLATE COLLECTION



The addition of a gable over the entry incorporates the porch into the main body of the house, while the stone delivers a vintage façade.

The DEER VALLEY COLLECTION

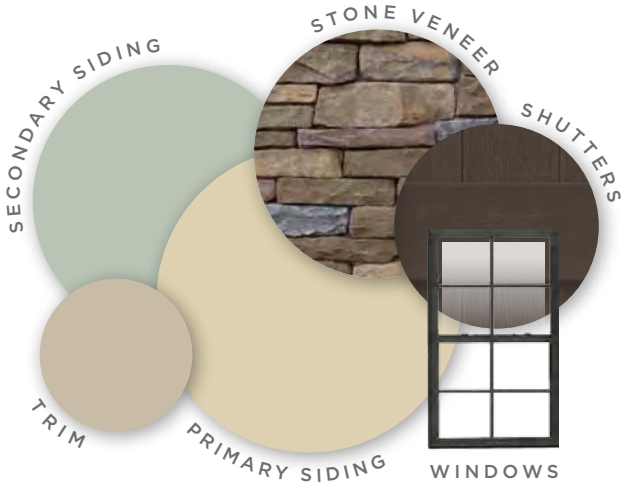


This typical 1980s house has no discernable style and is easy to miss with its dull color palette and horizontal lines. Also, since the porch roof sits below just one pair of windows, the overall appearance lacks symmetry.



Incorporating a variety of colors and textures introduced by the stone base, this completely updated exterior cleverly uses earth tones to create an original new look.

The TELLURIDE COLLECTION



By adding two gables and a front porch this house is thoroughly transformed. Incorporating splendid color and tapered column bases, completes the Craftsman style.

The GRANITE COLLECTION



Refer to the inside back cover for product specs.

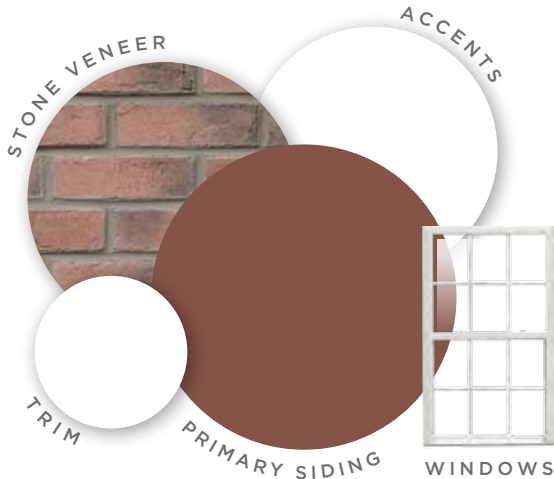
Unfortunately this house misses the mark on a classic style. Its hexagon window above the entryway is out of scale, while the front door lacks welcoming charm.



Color vividly changes the personality of this home and together with new, white-trimmed windows – including a small single-hung in the center of the second floor – a Colonial Revival is created.

The ADAMS

COLLECTION



An entirely new Shingle style home was fashioned by adding a warm stone base, shakes and a striking front porch. We paired-up the second-floor windows giving them a whole new look.

The SANDSTONE

COLLECTION



Refer to the inside back cover for product specs.



Narrow windows and an uninspired color choice prevent this house from impressing guests.



Widening the second floor windows and giving them a Craftsman grid pattern is a significant improvement. Next, design elements such stone piers and brackets - to catch the floor above - contribute elegance to a once forgettable house.

The SAN ANDREAS COLLECTION



Converting the large overhang into a functional porch changes this house into a Craftsman style. The newly-added dormer on the single-story side helps to give balance to the overall look.

The DAWN COLLECTION





This 1970s-style house is missing personality and architectural character. The front entry is unprotected and lacks a warm welcome.



New windows, siding and stone veneer have transformed the uninspiring facade in the before photo into a handsome, charming exterior. Architectural features such as the shuttered, divided-lite windows create a stately appearance, while stone veneer and lap siding complete the traditional look of a Colonial.

The CABIN
COLLECTION



REFRESH



ENHANCE

Simple structural enhancements can have a dramatic effect. A front porch extends a welcome entry, while a second-story gable breaks up the roofline on this boxy 70's Colonial. Siding materials, windows, shutters and colors work together to charming effect.

The BRONZE
COLLECTION





Get inspired.

For design ideas, look at model homes, home shows, historic neighborhoods, magazines and websites. Start a list of things you like such as colors, details or porches. Better still, take photos.

let's get started.

There's no time like the present to begin planning your exterior. With our online visualizer, you can transfer your ideas into exterior designs. Simply select a style and apply different colors, textures and materials. Explore the possibilities at **TheDesignedExteriorStudio.com**.

Find your style.

Choose a style appropriate for your house and neighborhood. Your contractor can help you select a style that suits your home without compromising your vision.



Put it all together.

We've made your job easier by specifying color combinations and products that work together to create a unified look. Use our suggestions as a template you can tailor to your requirements.



SINGLE-STORY HOMES



SPLIT-LEVEL HOMES



TWO-STORY HOMES

HOUSE 1			PAGE 12 - 13		HOUSE 9			PAGE 30 - 31		HOUSE 15			PAGE 44 - 45	
PRIMARY SIDING SECONDARY SIDING WINDOWS STONE FENCE-RAIL ACCENTS	THE FERN		THE HILLTOP		THE EMBER		THE BUCKSKIN		THE SLATE		THE DEER VALLEY			
	Napco D5 American Splendor - Slate		Napco D5 American Splendor - Khaki		Napco D5 American Splendor - Khaki		Cedar Spectrum Shingle - Clay		D4 Quest - Lakeshore Fern		Cedar Discovery Perfection T5 - Montana Suede			
	-		Napco CSP D7 - Sedona Red		Seasons - Tan		Vision Pro D4 - Clay		Cedar Discovery Perfection T5 - Pebblestone Clay		-			
	White, Raised Panel Shutters - Winestone		Ivory		White		Ivory, Raised Panel Shutters - Red		White		White			
	-		Ridgestone - Shade Mountain		-		LedgeStone - Chardonnay		-		True Stack - Shenandoah			
-			Standard - Khaki		-		Standard - Tan		Standard - White		Standard - White			
Trim Sheet - Graystone			Trim Sheet - Prairie		Board & Batten - Briarwood		Trim Coil - Tan		Solid Privacy Woodland Select - Weathered Cedar Fence		Solid Privacy Woodland Select - Natural Cedar Fence			
HOUSE 2			PAGE 14 - 15		HOUSE 10			PAGE 32 - 33		HOUSE 16			PAGE 46 - 47	
PRIMARY SIDING SECONDARY SIDING WINDOWS STONE FENCE-RAIL ACCENTS	THE RIVERSTONE		THE UNIVERSITY		THE STUDIO		THE MEADOWBROOK		THE TELLURIDE		THE GRANITE			
	Vision Pro D4 - Olive		Forest Ridge D4 - Cream		D4 Quest - Everest		D4 Quest - Pebblestone Clay		D5 American Splendor - Khaki		Cedar Select D7 - Evening Shadow			
	-		-		Board & Batten - Linen		-		D5 Quest - Sage		Board & Batten - Willow			
	Ivory		White		Ivory		Sandalwood		Black, Board & Batten Shutters - Brown		Black			
	ShadowLedge Stone - Easton		Brick - Clarion Colonial		Shadow LedgeStone - Chardonnay		-		Shadow LedgeStone - Chardonnay, Brown sills		Shadow LedgeStone - Easton, Brown accessories			
Solid Privacy Fence - Redwood			Solid Privacy Fence - Redwood		-		-		-		Standard - White			
Trim Sheet - Island Pearl			Trim Sheet - Pearl		Trim Sheet - Wicker		Trim Sheet - Canyon		Trim Sheet - Wicker		Board & Batten - Aspen			
HOUSE 3			PAGE 16 - 17		HOUSE 11			PAGE 34 - 35		HOUSE 17			PAGE 48 - 49	
PRIMARY SIDING SECONDARY SIDING WINDOWS STONE FENCE-RAIL ACCENTS	THE SANTA FE		THE REED		THE SUFFOLK		THE AUTUMN		THE ADAMS		THE SANDSTONE			
	Chatham Ridge T3 - Clay		Cedar Spectrum Shingle - Clay		D4 American Splendor - Flagstone		Cedar Select Perfection D7 Cedar Select - Plantation Teak		D4 Quest - Russet Red		Cedar Discovery Perfection D7, Pebblestone Clay			
	Forest Ridge D4 - Hampton Red		Board & Batten - Pearl		T3 American Comfort - Graystone		-		-		D5 Quest - Rugged Canyon			
	Ivory		White		White, Board & Batten 3-Board Closed Shutters - Vineyard Red		Ivory, Board & Batten 3-Board Closed Shutters - Red		White		White, Board & Batten 3-Board Closed - Dark Berry			
	-		Shadow LedgeStone - Bradford		Cut Cobblestone - Windfield		True Stack - Shenandoah		Brick - Monroe Colonial		True Stack - Shenandoah			
-			Standard - Khaki		-		Trim Sheet - White		-		Standard - Sandstone			
Trim Coil - Natural Almond			Trim Coil - Natural Almond		Trim Coil - Gray		-		Window and Garage mantels - White, Trim Sheet - White		Monticello Square Fluted 9.5" Columns - White			
HOUSE 4			PAGE 18 - 19		HOUSE 12			PAGE 36 - 37		HOUSE 18			PAGE 50 - 51	
PRIMARY SIDING SECONDARY SIDING WINDOWS STONE FENCE-RAIL ACCENTS	THE STRAW		THE WASHINGTON		THE QUEEN ANNE		THE SUNSET		THE STAINLESS		THE PEWTER			
	Cedar Discovery Perfection D7 - Classic Cream		-		Vortex Extreme D4 - Classic Cream		Vortex Extreme D5 - Mediterranean Palm		Seasons D6 - Gray		Board & Batten - Gray			
	D5 Quest - Pebblestone Clay		D5 Quest - Classic Cream		-		Heritage Cedar Perfection Shingle Siding - Sedona Red		Chatham Ridge T3 - Natural Almond		Heritage Hill D4 - Flint			
	Ivory		White, Raised Panel Shutters - Black		White, Raised Panel Shutters - Black		Red		Sandalwood		White, Board & Batten 4-Board Open Shutters - Black			
	-		Brick - Fulton Colonial		Brick - Fulton Colonial		Shadow LedgeStone - Chardonnay		Brick - Clarion Colonial		Cut Cobblestone - Winfield, Accessories - Cream			
-			T-Rail - White		Railing Custom Design - White		Standard Railing - Khaki		-		Standard Railing - White			
Pro-Select D5 Vertical Siding - Pebblestone Clay			Trim Sheet - White		Trim Coil - Dover White, Window & Garage Mantels - White		Vertical Siding - D5 Premium Solid Soffit - Sandy Tan		Vision Pro D4 - Almond, Trim Coil - White		Trim Coil - White			
HOUSE 5			PAGE 20 - 21		HOUSE 13			PAGE 38 - 39		HOUSE 19			PAGE 52 - 53	
PRIMARY SIDING SECONDARY SIDING WINDOWS STONE FENCE-RAIL ACCENTS	THE FIELDGRASS		THE LAKESIDE		THE ELKHORN		THE PINE		THE SAN ANDREAS		THE DAWN			
	Dimensions D4 - Mist		Progressions T3 - Khaki		Board & Batten - Autumn Tan		D5 Progressions D5 - Thistle		Cedar Dimensions Shingle - Pewter		Progressions D5 - Autumn Tan			
	Board & Batten - Beige		Cedar Dimensions Shingle - Russet Red		Dimensions D4 - Weathered Ash		Cedar Dimensions Shingle - Olive		Progressions D5 - Nantucket Gray		Cedar Dimensions Shingle - Shaded Cedar			
	White		White		Black		Red		-		Ivory, Board & Batten 3-Board Closed Shutters - Red			
	Shadow LedgeStone - Lehighton		Ridgestone - Chardonnay		-		Shadow LedgeStone - Easton		Cobblestone - Shade Mountain		Shadow LedgeStone - Bradford			
-			-		-		Contour Rail - White with custom post		-		Contour Rail - Khaki with custom post			
Trim Coil - White			Trim Coil - White		Trim Coil - Ivory		Trim Coil - Ivory, Board & Batten - Thistle		Trim Coil - White, Brown Sills		Board & Batten Siding - Autumn Tan, Trim Coil - Almond			
HOUSE 6			PAGE 22 - 23		HOUSE 14			PAGE 40 - 41		HOUSE 20			PAGE 54 - 55	
PRIMARY SIDING SECONDARY SIDING WINDOWS STONE FENCE-RAIL ACCENTS	THE LINCOLNTON		THE REDWOOD		THE SOHO		THE LODGE		THE GULLWING		THE SAGE			
	Vortex Extreme D4 - Canyon		Vortex Extreme D4 - Natural Almond		Board & Batten - Flint		Cedar Spectrum Shingle - Thistle		Progressions D5 - Wicker		Cedar Dimensions Shingle - Olive			
	-		Heritage Cedar Hand-Split Shingle Siding - Cabin Cedar		Cedar Spectrum Half Round - Flint		Board & Batten - Briarwood		Cedar Dimensions Shingle - Pewter		-			
	Black, Louvered Shutter - Black		Red		White		Taupe		White, Raised Panel Shutters - Dark Spruce		Ivory, Board & Batten Shutters - Spanish Moss			
	Brick - Fulton Colonial		Cut Cobblestone - Winfield		Brick - Clarion Colonial		Tuscan Fieldstone - Shennendoah		Brick - Chester Colonial		Brick - Clarion Colonial, Cut Cobblestone - Winfield			
Contour Rail - Island Pearl			Standard Rail - White		-		-		-		-			
Trim Coil - Island Pearl			Trim Coil - Classic Cream		Trim Coil - White		Trim Coil - Briarwood		Trim Coil - White		Trim Coil - Almond, Cream Sills			
HOUSE 7			PAGE 24 - 25		HOUSE 21			PAGE 56 - 57						
PRIMARY SIDING SECONDARY SIDING WINDOWS STONE FENCE-RAIL ACCENTS	THE WEDGEWOOD		THE CAPE MAY		THE MAPLE		THE LOREDO							
	Cedar Select Perfection D7 - Blue Ridge		American Splendor D6 - Cape Blue		Vortex Extreme D4 - Natural Almond		Heritage Cedar Perfection Shingle Siding Cottage Gray							
	American Essence D6 - Herringbone Mist		CSHS - Cream		Heritage Cedar Perfection Shingle Siding - Cabin Cedar		-							
	White		White, Louvered Shutters - Winestone		Ivory		Ivory							
	Brick - Fulton Colonial, Shadow LedgeStone - Shade Mountain		Brick - Chester Colonial		Brick - Clarion Colonial, LedgeStone - Chardonnay		Cut Cobblestone - Winfield							
-			-		T-Rail with custom post - White		-							
Rectangle Gable Vents - White			Trim Coil - White		Trim Coil Dover - White		Garage Mantel, Painted - Graphite Gray							
HOUSE 8			PAGE 26 - 27		HOUSE 22			PAGE 58 - 59						
PRIMARY SIDING SECONDARY SIDING WINDOWS STONE FENCE-RAIL ACCENTS	THE FAWN		THE VISTA		THE CABIN		THE BRONZE							
	Dimensions D4 - Wicker		Cedar Dimensions Shingle - Russet Red		Heritage Cedar Perfection Shingle Siding - Stone Clay		Heritage Cedar Perfection Shingle Siding - Twilight Shadow							
	Cedar Dimensions Shingle - Khaki		Dimensions D5 - Khaki		-		-							
	Ivory		Ivory		Ivory, Raised Panel Shutters - Winestone		White, Raised Panel Shutters - Winestone							
	Ridgestone - Chardonnay		Ridgestone - Buckingham		Brick - Fulton Colonial		Shadow LedgeStone - Shade Mountain							
-			T-Rail - Khaki		-		-							
Trim Coil - Wicker			Trim Coil - Wicker		Rectangular Gable Vent - Sandy Tan		Rectangular Gable Vent Painted - Winestone							



When you choose building products for your home, you want them to last. Just as important, you want the company that stands behind those products to be there when you need them. With Ply Gem, you can choose with confidence. Every product we manufacture meets strict quality standards and is backed by an industry leader with a longstanding record of integrity. Residential builders, remodelers and architects have put their trust in us for over 60 years. **Experience the Ply Gem difference. Build your future with us.**

5020 Weston Parkway, Suite 400 Cary, North Carolina 27513 1-888-9-PLYGEM PLYGEM.COM

Ply Gem, the Ply Gem logo, the "Building Products. Building Success." slogan, Ply Gem Enviro, the Ply Gem Enviro logo, Ply Gem Windows, the Ply Gem Windows logo, Ply Gem Stone, and the Ply Gem Stone logo are trademarks of Ply Gem Industries, Inc. Cellwood, the Cellwood logo, Mastic, the Mastic logo, Dreamcolors, Richwood, the Richwood logo, Leaf Relief, and the Leaf Relief logo are trademarks of Alcoa Home Exteriors, Inc. Variform and the Variform logo are trademarks of Variform, Inc. NAPCO, the NAPCO logo, Durabuilt, the Durabuilt logo, Monticello and the Monticello logo are trademarks of Napco, Inc. Kroy and the Kroy logo are trademarks of Kroy Building Products, Inc. LEED is a trademark of U.S. Green Building Council, and Energy Star is a trademark of the United States Environmental Protection Agency. Georgia-Pacific, GP, and the Georgia Pacific logo are owned by or licensed to Georgia-Pacific Wood Products, L.L.C. © 2011 Ply Gem Industries, Inc. 6001099991101/BB/CG



Printed with environmentally sensitive vegetable based inks.



SIDING + DESIGNER ACCENTS WINDOWS STONE VENEER FENCE + RAIL

PLY GEM WINDOWS • MASTIC HOME EXTERIORS • VARIFORM • NAPCO • CELLWOOD • PLY GEM STONE • KROY plygem.com

