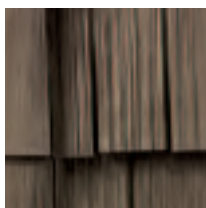




REMODELING

FIELD GUIDE



DESIGNED
TO **INSPIRE.**



THE DESIGNED EXTERIOR

Whether the reasons are functional or aesthetic, making updates to your existing home exterior is inevitable. Through *The Designed Exterior™* you can beautifully transform the look of your house with low-maintenance materials that will allow you to spend time enjoying your home instead of fixing it.





DESIGNED TO WORK TOGETHER.

Our **Products.**

- Siding, Soffit and Accessories
- Windows and Doors
- Stone and Brick Veneer
- Designer Accents
- Fence and Rail
- Gutters and Gutter Protection



The background of the page is a collage of various exterior building materials and products. It includes sections of stone masonry in different colors (grey, tan, brown), red brick, green horizontal siding, and dark red vertical siding. There are also images of white decorative finials, a white pediment, a dark brown arched window, a black square window, a green square shutter, a large brown arched shutter, a small tan arched shutter, and a dark red double door with glass panes.

For more than 65 years, professionals and homeowners alike have trusted Ply Gem as a leading building products manufacturer. Continuing that legacy, we partnered with one of the nation's foremost national architectural firms to develop *The Designed Exterior™*. Product combinations and color palettes have been carefully conceived to bring each style to life. The result is a complete exterior solution that's cost-effective to build and beautiful to behold — backed by a single company that's been serving the building industry for generations.

Home IMPROVED

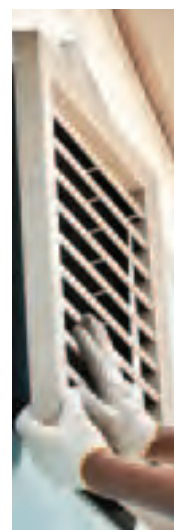
Whether it's "new to you" or has been called "home" for decades, it may be time to replace or remodel the exterior elements of your house. By using materials that are intended to work together from *The Designed Exterior™*, you can craft the style and curb appeal you've been imagining for years.

Still unsure if it's truly possible to transform an outdated house into one that's fresh and innovative? Check out how we helped transform a forgettable 1970s two-story into the envy of the neighborhood — in less than a month.

Before



Scan this code
with your QR
Reader to get
more details about
The Designed Exterior™.





DAY 3

Applying the principles of *The Designed Exterior™*, the professionals started by adding a portico and rooftop dormer. These purely cosmetic embellishments helped to create an architecturally authentic shingle-style look.



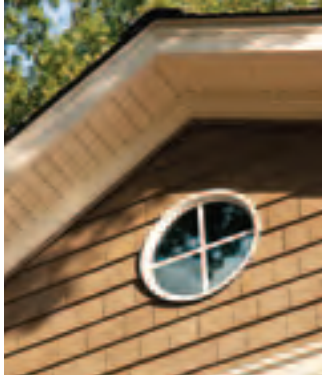
DAY 10

New energy-efficient windows and Structure® insulated vinyl siding gives the home an updated appearance while contributing to its overall indoor air comfort and energy efficiency.



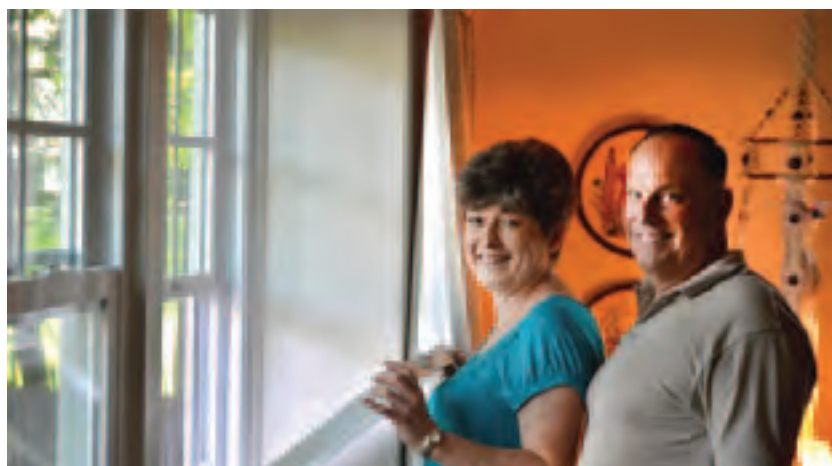
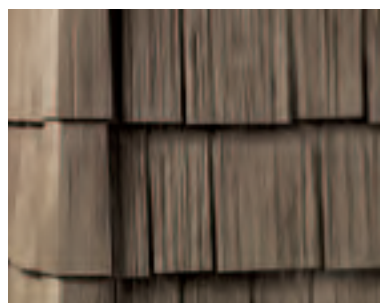
DAY 17

From siding and stone to gutters, replacement windows and accessories, within just a few weeks this home underwent a comprehensive makeover and is a model of the beauty and efficiency that can be achieved by updating an existing house.



"It was very important to my wife and I that the style of our home be coordinated — with colors, materials and textures chosen for a purpose. Thanks to *The Designed Exterior™*, we were able to select a new exterior for our home and preview how it would look before work even started. The result is just beautiful."

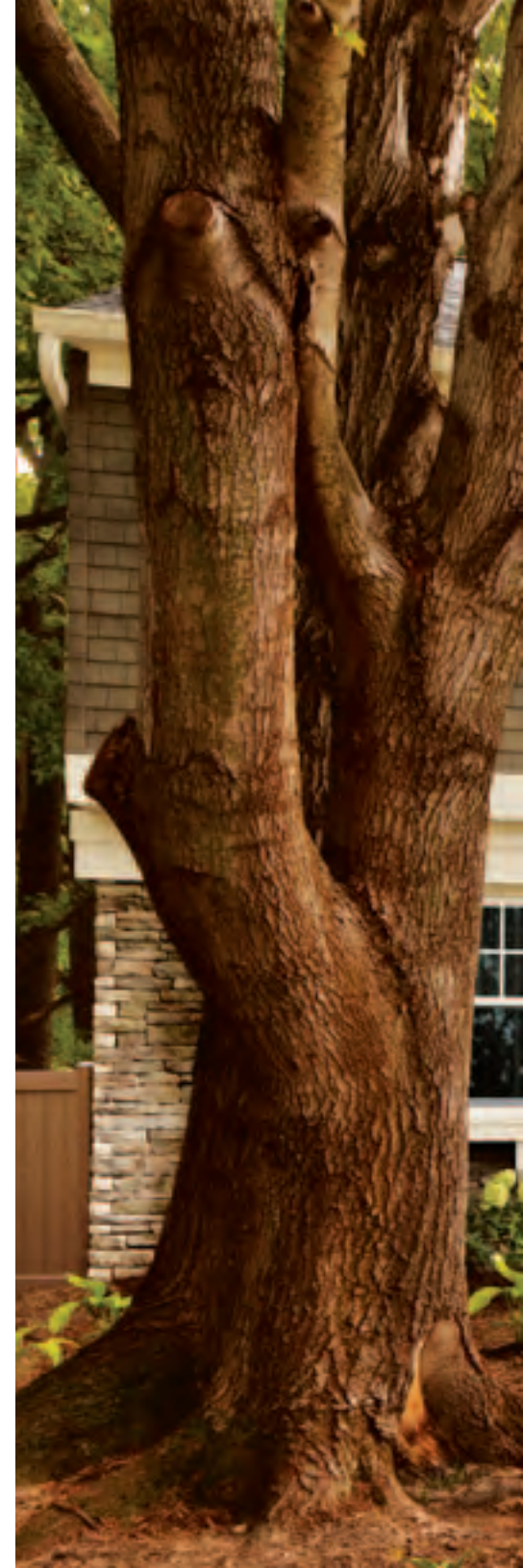
- Gary Gaal, Alexandria, VA



The Designed Exterior™ is a complete exterior solution that enables you to create a look that reflects your personal style.

It's never been easier to beautifully update the home you've loved for years with a combination of low-maintenance materials that will allow you to spend time enjoying your house, instead of fixing it.

The mixture of color and texture in Shadow LedgeStone adds dramatic rustic beauty and cleverly coordinates the rich earth tones of siding with the vivid hues of the shutters and accessories.





The Dramatic Finish

REALIZING YOUR DREAM.

You've been visualizing it for years. Now that you're ready, the question is: **where to begin?**

HOW TO USE THIS FIELD GUIDE

The Designed Exterior™ will help you create the look you've been hoping for.

START by selecting a "before" home — one similar to your own. There's sure to be a ranch style, split-level or two-story house that you can relate to.



REFRESH REMODEL

NEXT, check out how you can upgrade the look of your house by simply resurfacing it with a mix of styles, textures and materials. For instance, new windows are a major architectural feature that will add distinctive character and provide increased comfort and savings — while shutters, trim and accessories add personality and charm.



ENHANCE REMODEL



CONSIDER THIS. Perhaps it's time to give your home a dramatic facelift. Think about adding purely cosmetic modifications such as a dormer, gable or front porch. These straightforward design elements make it possible to completely transform the overall house look into a classic architectural gem.

THE COLLECTIONS

The right mix of textures, colors and architectural details can fashion a harmonious design.

Throughout this Field Guide we've identified color and material combinations — created by architects — that coordinate beautifully and form each Designed Exterior. Use them to guide your design choices. Yet, feel free to mix and match homes and collections to transform the look of your existing house.

EXPLORE THE
POSSIBILITIES.





This Field Guide showcases a range of traditional and contemporary exterior design styles. The looks were selected in partnership with a leading national architectural firm and represent today's most popular exteriors. Product specifications and recommended color schemes are provided for each architectural style. Use them to guide your design choices, achieve an authentic look and give your home greater curb appeal.



SINGLE-STORY HOMES

PAGES 14—31



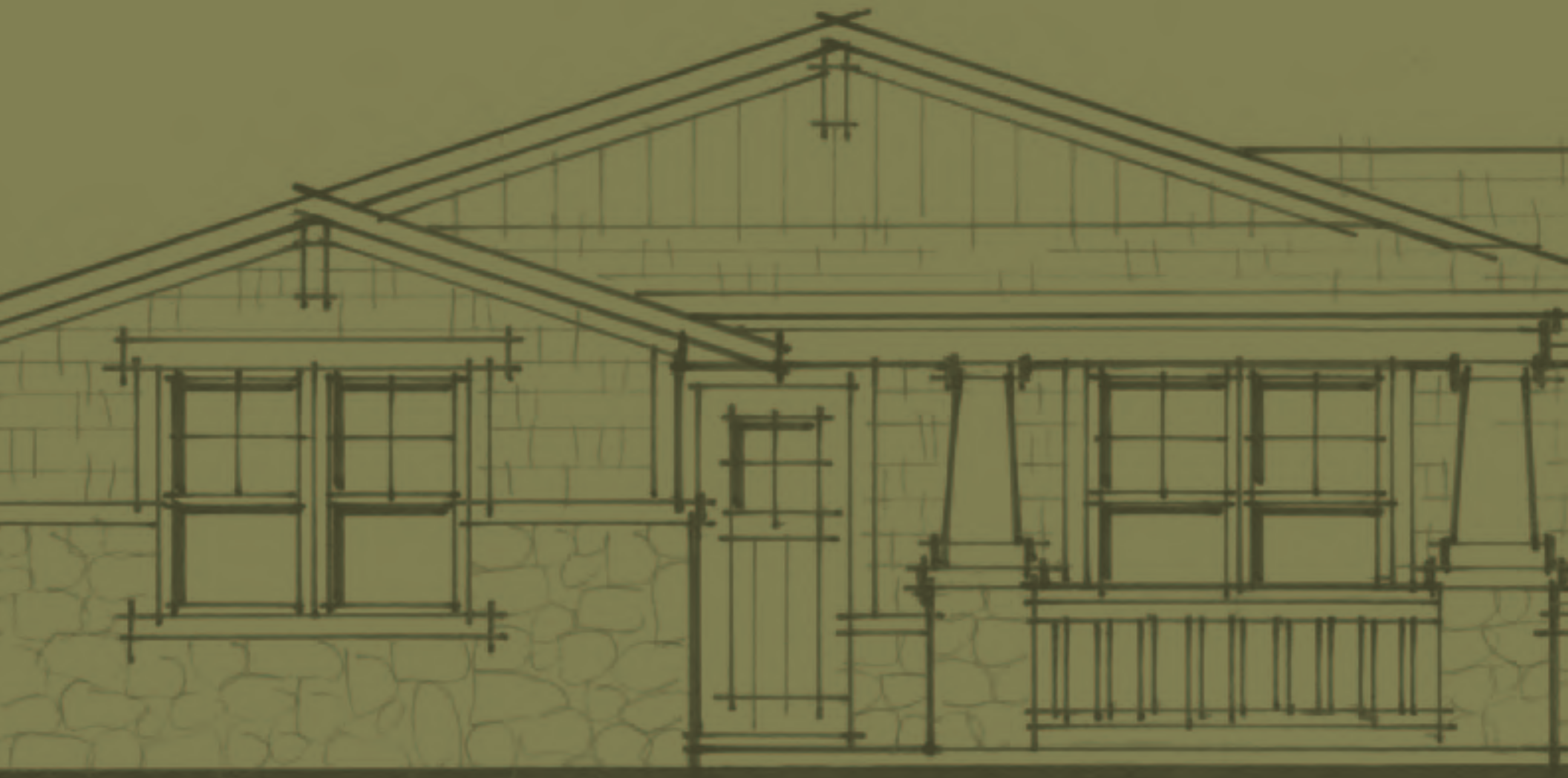
SPLIT-LEVEL HOMES

PAGES 32—45



TWO-STORY HOMES

PAGES 46—63



SINGLE-STORY — HOMES —

Single-story houses, or more commonly referred to as ranch-style houses, are widely preferred by homeowners because of their ease of accessibility. Unfortunately, it's all too common that these houses lack individuality and character.

However, *The Designed Exterior™* helps to inspire beautifully updated, low-maintenance home exteriors by combining windows, stone veneer, siding profiles and colors, along with other accents that are intended to give any home a fresh and dramatically customized look.

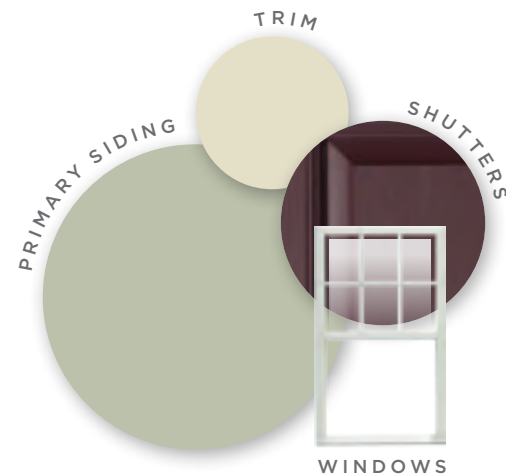


This simple, Cape Cod cottage-style home has good proportions but is short on detail — the windows lack grids, its shutters are under-sized and its porch columns are too thin.

Adding color — inspired by the architecture itself — makes a dramatic impact. Right-sized shutters, the updated six-over-one window pattern and new, more substantial porch columns deliver an exceptional look.

The FERN

COLLECTION





ENHANCE

A mix of colors and textures completely transform this once forgettable-looking home into an enviable Craftsman. Single windows with shutters were replaced by double windows with an authentic three-over-one grille pattern. The addition of stone columns, along with a railing application, creates a stylish front porch.

The HILLTOP

COLLECTION



This typical Midwestern house lacks fine points and could be considered a watered-down Prairie style. Its windows are ordinary, colors are dull and the entryway is especially weak.



This home's existing style received a boost by updating the color and texture. Its plain windows were exchanged with a Prairie window pattern in the upper sash, the existing brick was replaced with Shadow Ledge stone and the small front porch was strengthened by adding a column.

The RIVERSTONE

COLLECTION



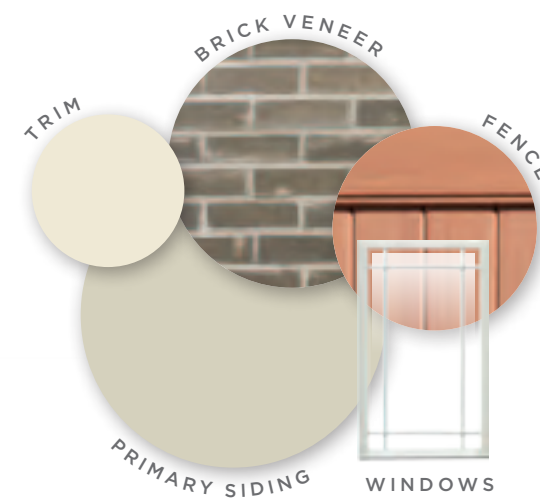


ENHANCE

The improved version of this Prairie-style home includes strong horizontal lines paired with clusters of casement windows. A front porch with massive square piers was added to give the house a bold entrance.

The UNIVERSITY

COLLECTION



This home displays some typical architectural missteps. Shutters should be sized to function — in other words, be able to close over the entire window. Picture and corner windows were never intended to have shutters. Often times this was an attempt to add animation and color to an otherwise plain house.

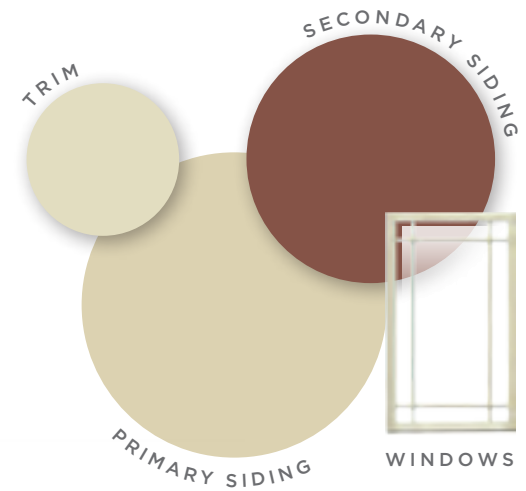


BEFORE

In order to bring visual interest to this home, two different siding colors were chosen. The siding on the lower portion of the home is darker and wider — a technique referred to as “rusticated.” In addition, double hung windows were replaced by casements with the Prairie grille pattern.

The SANTA FE

COLLECTION



REFRESH



ENHANCE

This house lacked the celebration of entry. A front porch and roof gable were added, delivering the Craftsman style, which pairs well with the existing low-pitched roof and completely changes the appearance of the home. By altering window styles and placement, varying siding materials — shakes and board-and-batten and adding columned piers along with stone at the base — this home now appears architecturally authentic.

The REED

COLLECTION



Refer to the inside back cover for product specs.

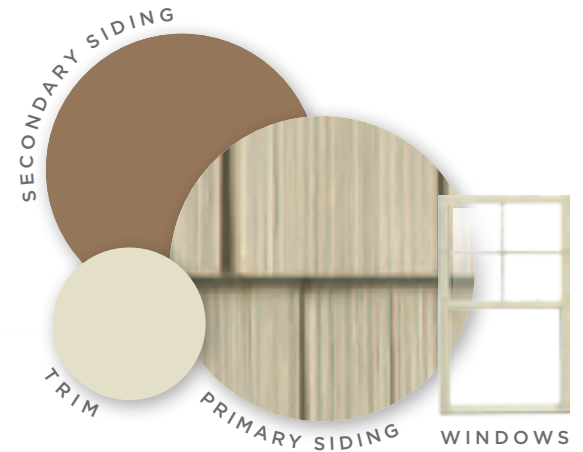
This house is a textbook example of what commonly happens when a homeowner chooses to convert a garage into living space.



By simply using a mix of siding styles and employing trim work throughout the design, this home now has a fresh, cohesive look. A new four-over-one window pattern also adds character and style to this once sparse-looking house.

The STRAW

COLLECTION





ENHANCE

Given a little more budget, a dignified Colonial Revival is possible. The addition of brick and a porch with a roof gives the home an entirely new look. A triple window with a six-over-one pattern replaces the original picture window and completes the steps necessary to make this house a classic.

The WASHINGTON

COLLECTION



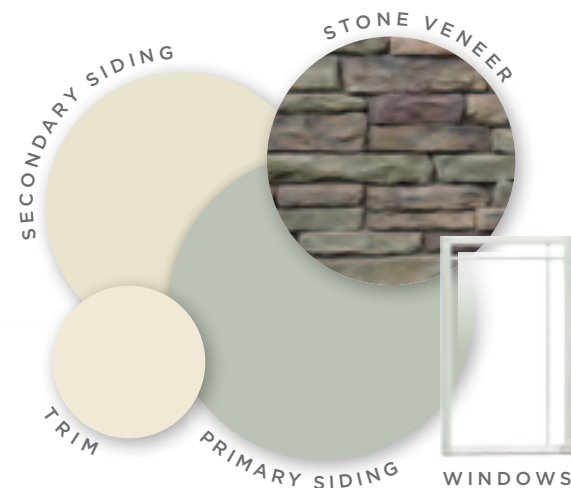
Refer to the inside back cover for product specs.

Unfortunately this mid-century Modern home has lost its contemporary appeal.



By celebrating its geometric shapes with window and door patterns, new chimney stone and a combination of horizontal and vertical siding, this house achieves a more modernized style.

The FIELDGRASS COLLECTION





ENHANCE

By adding a guest-friendly front porch and carrying the fireplace stone across the entire base of the structure, this house transforms into the chic mid-century Modern it was intended to be.

The LAKESIDE

COLLECTION



Refer to the inside back cover for product specs.

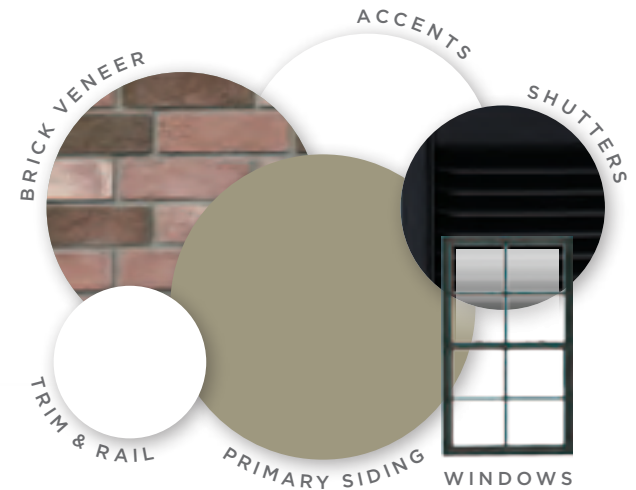
The intended style of this house is lost because its primary elements — arched beams, enormous roof and hidden brick — lack consistency.



The combination of false roof dormers, new — more prominent — front porch columns and brick wainscoting allows this house to embrace a Colonial Revival architectural style. By eliminating the arched beams and giving it a strong, dignified line, the front porch makes a statement.

The LINCOLNTON

COLLECTION





ENHANCE

This house was transformed into a traditional Craftsman style by first framing a gable and portico atop the overbearing roof, and then completed by adding stone, shakes and front porch pillars.

The REDWOOD

COLLECTION

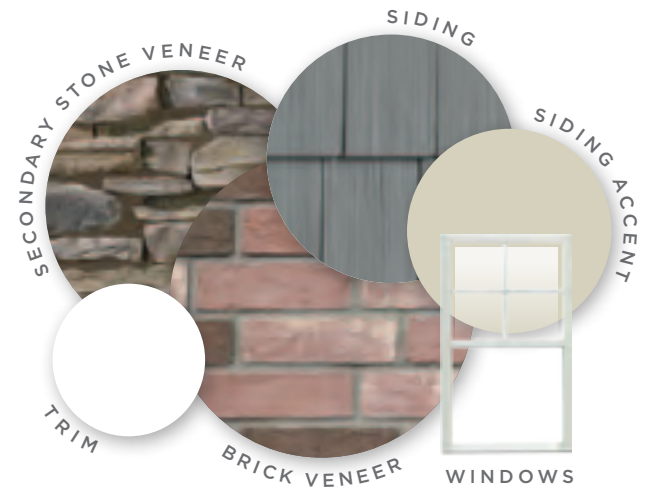


The front entry of this ordinary home is lost — overwhelmed by battling gables and an unfortunately prominent garage that is flanked by brick, which acts like goal posts.



Colorful shakes along with louvered gable vents and brace supports adorn this home with style; while the addition of a secondary stone surface gives mass to the small gable area and helps lead guests to the front door.

The WEDGEWOOD COLLECTION



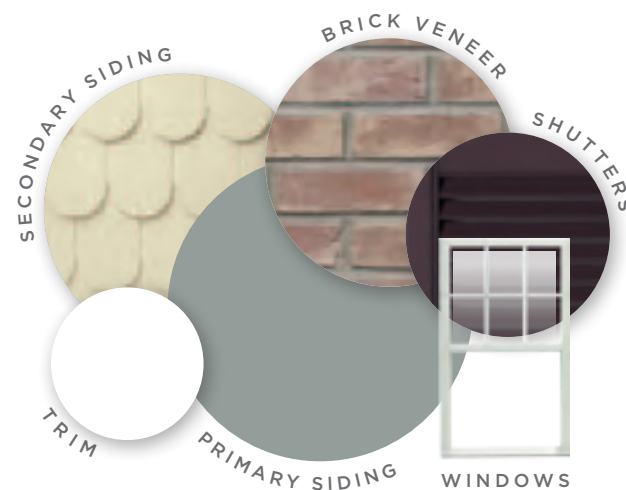


ENHANCE

This newly created Victorian ranch was fashioned by adding a front porch that emphasizes its entrance and prevents the garage from being the highest point on the house. Scallop shakes and brace supports along with playful colors and updated brick across the base lend authenticity to the refreshed style.

The CAPE MAY

COLLECTION



Refer to the inside back cover for product specs.

This 70s style house is drab with unadorned windows and a front section that projects yet has no windows or other design elements.



Without changing the structure, but by adding classic louvered vents, two siding types and stone along its base, this house was given a chic new look.

The FAWN

COLLECTION





ENHANCE

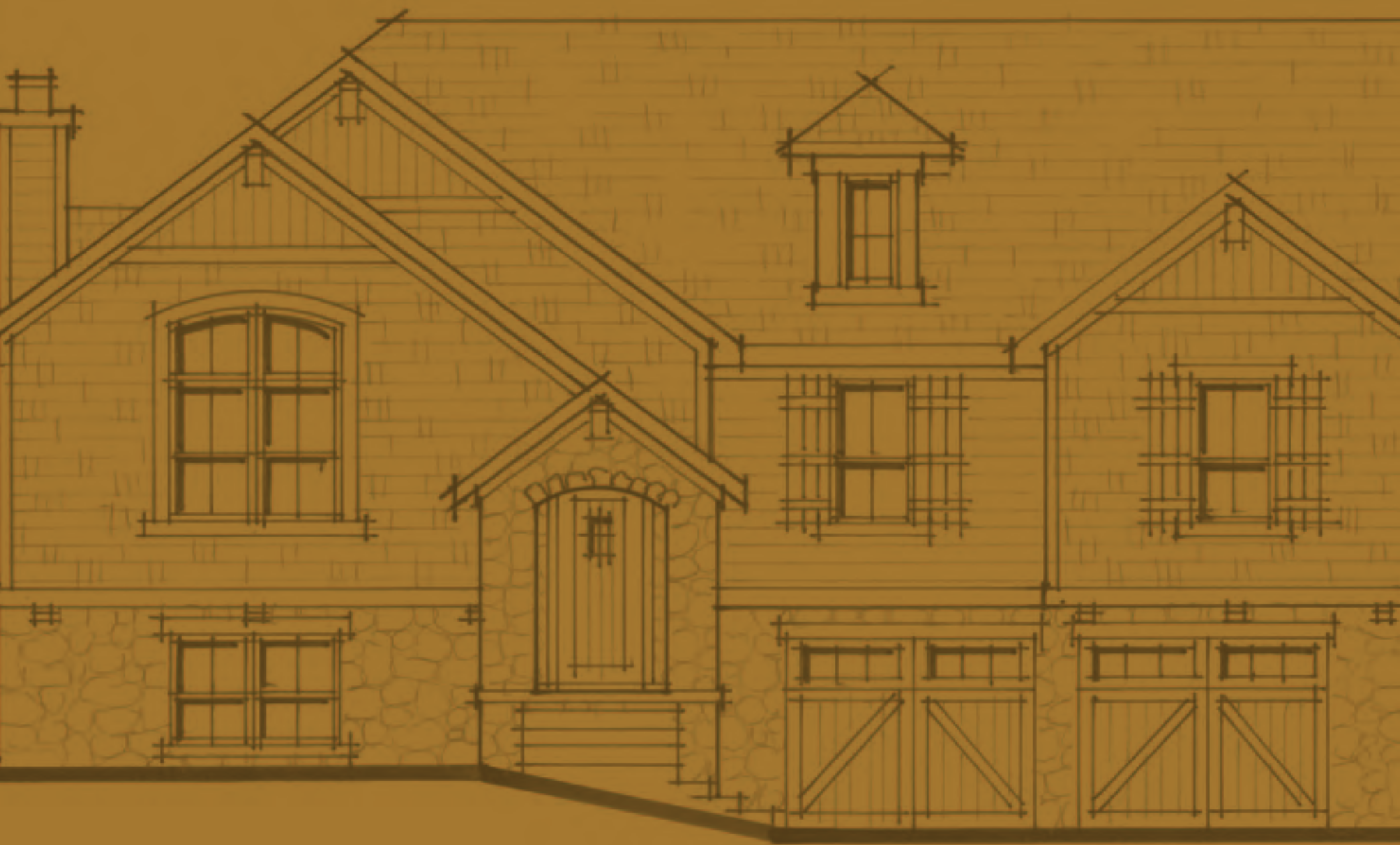
The addition of a porch and framed gable on top of the original roof provides balance and makes the windowless element irrelevant. Yet it's the red shakes and Shadow Ledgestone that completely change this house into a Craftsman.

The VISTA

COLLECTION



Refer to the inside back cover for product specs.



SPLIT-LEVEL — HOMES —

Split-level construction was a trend that dominated new home creation throughout the 1960–70s. Yet more often than not, it lacked any sense of traditional residential architecture. *The Designed Exterior™* takes this challenge to heart and suggests that by adding a combination of materials, colors and textures, these once outdated home exteriors can become customized architectural looks.



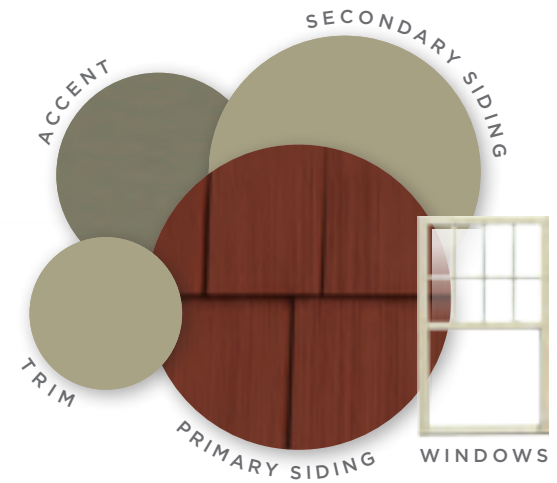
This example reveals one of the typical challenges found in split levels: it looks like two houses — a single story and a two story — pressed together. The pale, monotone color scheme is boring, and without a front porch, there's no defined point of entry.



Removing its ill-fitted shutters and blending a trio of siding profiles with warm colors, the look of this house is unified.

The EMBER

COLLECTION



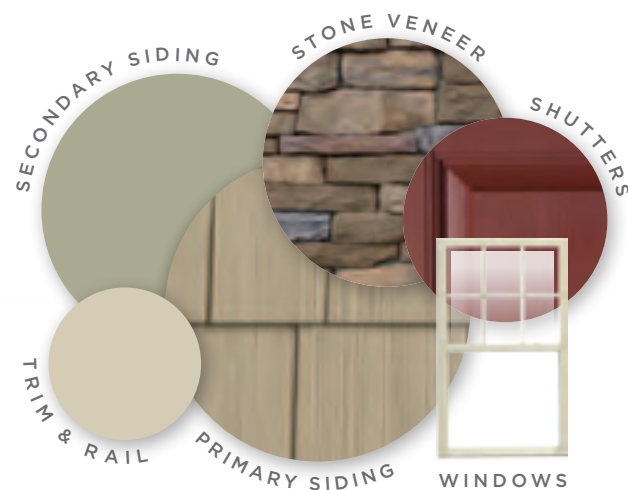


ENHANCE

A gabled porch provides a grand entry point and unites the two levels together. Stone, along with six-over-one windows, right-sized shutters and other accents give this home a Shingle-style appeal.

The BUCKSKIN

COLLECTION



Refer to the inside back cover for product specs.

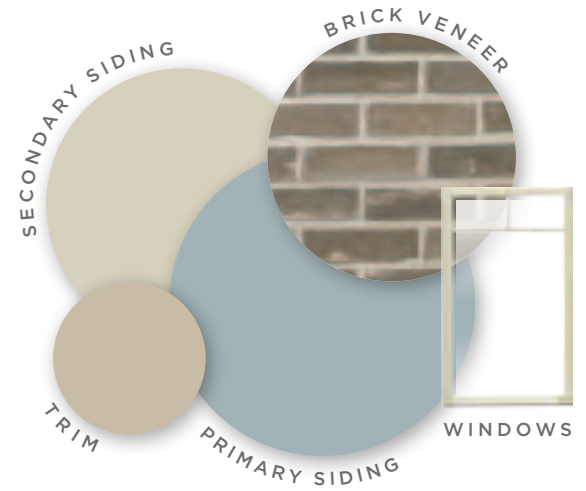
The garage door on this 70s-style house demands attention; while the combination of inconsistent detail elements prevent it from claiming a true style.



Adjusting siding profiles and adding a brick entrance column offsets the large garage door and brings balance to the look of this house. Additionally, Prairie-style window grids deliver architectural authenticity.

The STUDIO

COLLECTION





ENHANCE

A hip roof is added to extend a new stone porch in front of the garage. The updated windows with thinner casements create a vertical contrast to the horizontal lines of the house.

The MEADOWBROOK

COLLECTION



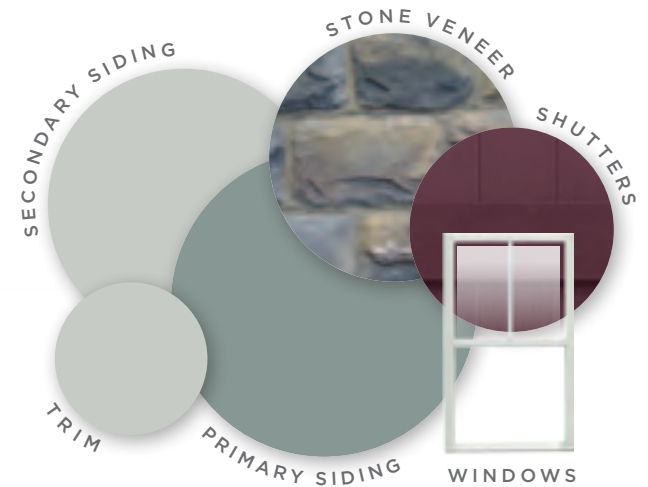
This drab, outdated exterior is monotonous and lacks both visual appeal and a welcoming front entrance.



The addition of columns creates a small, defined, front porch; while including stone and splashes of color bring visual interest and personality to this house.

The SUFFOLK

COLLECTION





ENHANCE

A gable, along with newly proportioned windows and updates to color and texture through both stone and siding, transform this into a charming, Shingle-style house.

The AUTUMN

COLLECTION



This colorless house looks outdated with its iron work columns, painted brick and window “wings.”

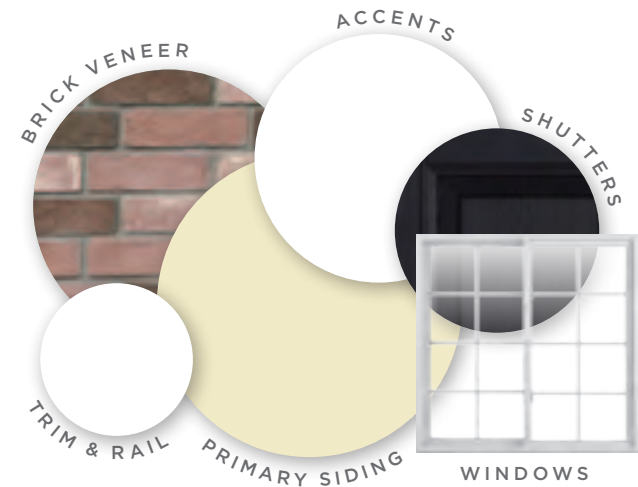


BEFORE

By adding substantial front porch columns, updating the windows with grids and incorporating brick with color, a Colonial-style exterior was created.

The QUEEN ANNE

COLLECTION



REFRESH





Coordinated roof and front porch gables work well together and team up beautifully with the stone and siding profiles to transform this house into a Craftsman.

The **SUNSET** COLLECTION



Refer to the inside back cover for product specs.

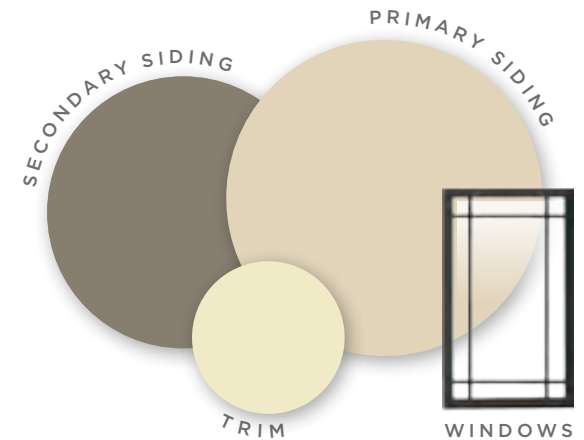
This monochromatic “challenge” with plain windows and no sense of entry, lacks balance and is overwhelmed by the garage and its gables.



Two different siding profiles give this house an architecturally interesting look, while the addition of black windows with prairie grids enhances its character.

The ELKHORN

COLLECTION



REFRESH





ENHANCE

The overall look of this home is unified through its use of complementing stone and siding colors. Adding a front porch with formidable columns makes this house appear far more welcoming.

The PINE

COLLECTION



Refer to the inside back cover for product specs.



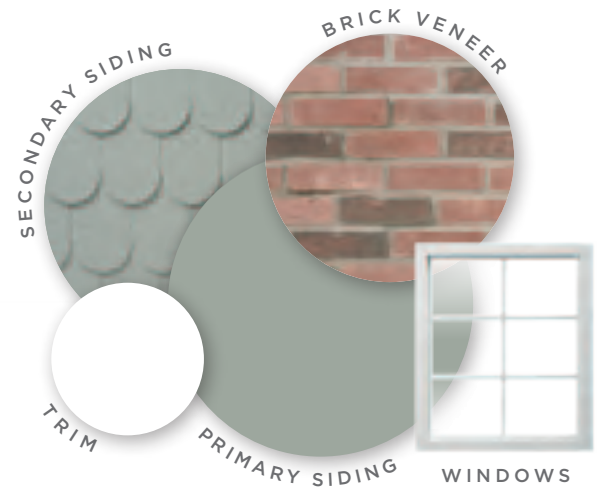
While it lacks discernible style and detail, the primary challenge with this home is the scale and balance of its components — such as the disproportionately large half-round window.



Simply adding accessory details to the gables and mixing siding styles assigns character and helps this newly created Victorian exterior to extend a warm welcome to guests.

The SOHO

COLLECTION



REFRESH



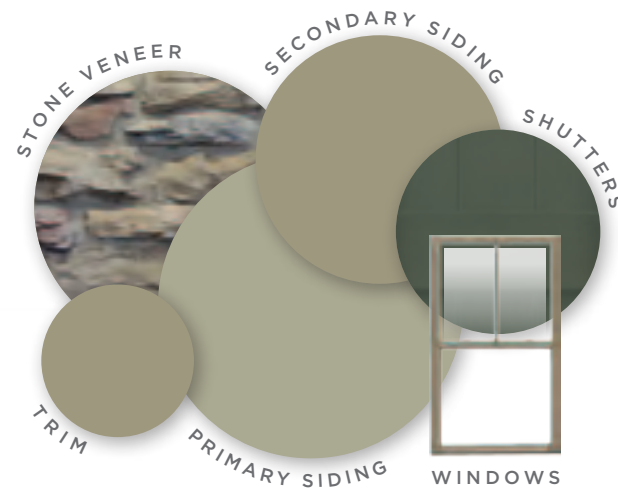


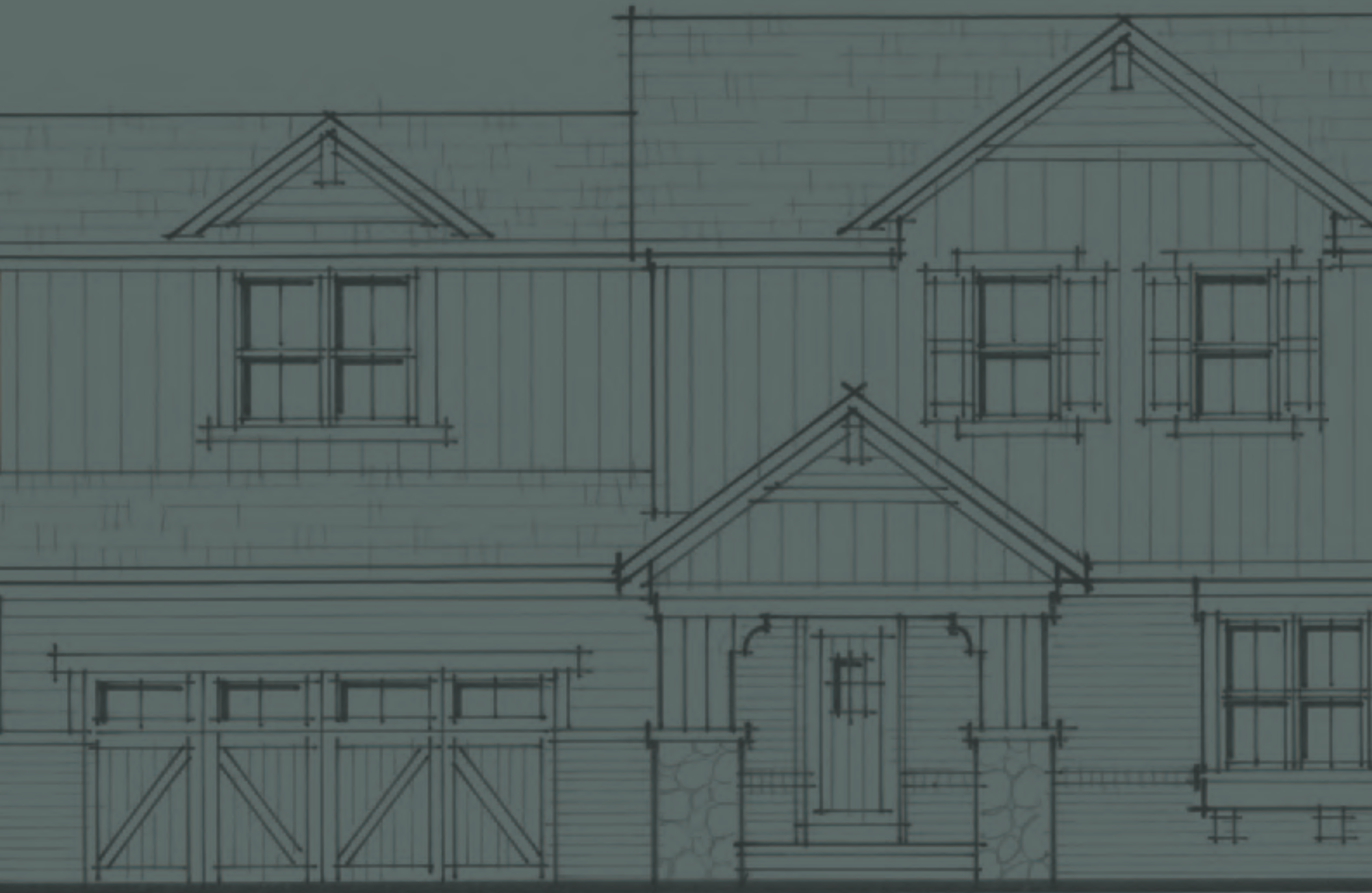
ENHANCE

Creating this French Country look started with new windows. It is further stylized by adding a stone entryway, reducing the scale of the gables and utilizing two different siding profiles — shakes and board-and-batten.

The LODGE

COLLECTION





TWO-STORY — HOMES —

The interior space available in a two-story home allows families the room they need to comfortably spread out. Yet, all too often what works well inside the house presents homeowners with exterior design and curb appeal challenges.

The Designed Exterior™ makes it possible for you to explore the possibilities and create a home exterior that will be the envy of the neighborhood.



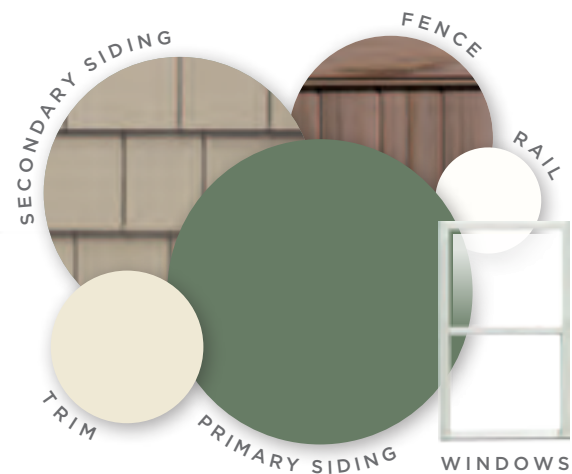
This charming house, with its friendly front porch, is bursting with potential but lacks the style and color to make it stand out in the neighborhood.



Minor changes to just the color and texture show the impact that a material change can have on the personality and look of a house.

The SLATE

COLLECTION



REFRESH





ENHANCE

The addition of a gable over the entry incorporates the porch into the main body of the house, while the stone delivers a vintage façade.

The DEER VALLEY

COLLECTION



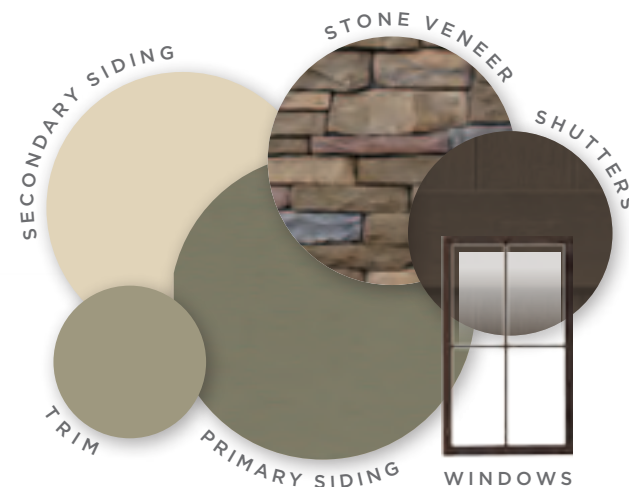
This typical 1980s house has no discernible style and is easy to miss with its dull color palette and horizontal lines. Also, since the porch roof sits below just one pair of windows, the overall appearance lacks symmetry.



Incorporating a variety of colors and textures introduced by the stone base, this completely updated exterior cleverly uses earth tones to create an original new look.

The TELLURIDE

COLLECTION



REFRESH



ENHANCE

By adding two gables to the roof line and a front porch, this house is thoroughly transformed. Incorporating splendid color and tapered column bases completes the Craftsman style.

The GRANITE

COLLECTION



Refer to the inside back cover for product specs.

Unfortunately this house misses the mark on a classic style. Its hexagon window above the entryway is out of scale, while the front door lacks welcoming charm.



Color vividly changes the personality of this home with new, white-trimmed windows. Adding a small single-hung in the center of the second floor creates a Colonial Revival look.

The ADAMS

COLLECTION





ENHANCE

An entirely new Shingle-style home was fashioned by adding a warm stone base, shakes and a striking front porch. The second-floor windows are paired up, giving them a whole new look.

The SANDSTONE

COLLECTION



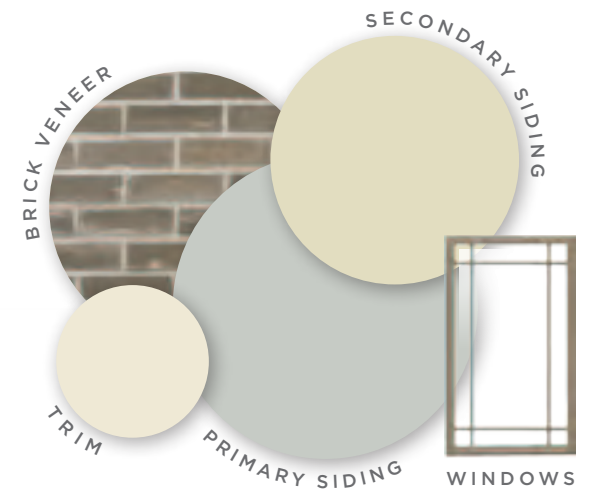
Refer to the inside back cover for product specs.

This once Modern house is severely outdated and unfortunately, its overall appearance is missing warmth and curb appeal. The lack of windows and odd proportions present a visual challenge.



To help bring balance, louvered vents were added as accents to either side of the new upper-level windows. Then, by also adding brick to the base of the house, Prairie-style architecture is introduced.

The STAINLESS COLLECTION



REFRESH



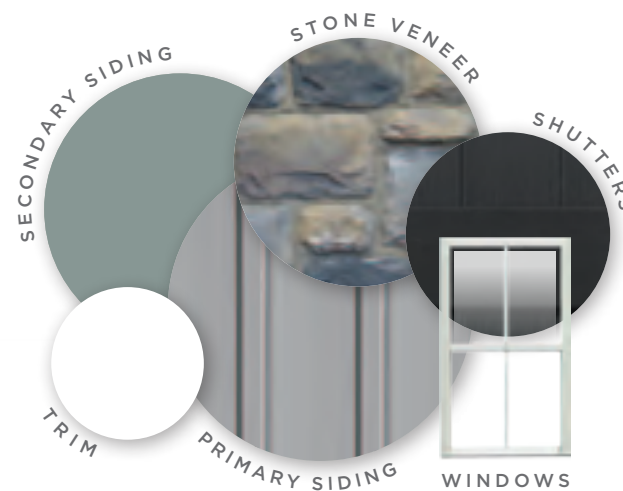


ENHANCE

The newly added gables play a role in the transformation of this house. Then through color, as well as pairing stone with board and batten siding and shutters, this beautiful exterior has become a model for others in the neighborhood.

The PEWTER

COLLECTION



Narrow windows and an uninspired color choice prevent this house from impressing guests.



Widening the second floor windows and giving them a Craftsman grid pattern is a significant improvement. Design elements such as stone piers and brackets — to catch the floor above — contribute elegance to a once forgettable house.

The SAN ANDREAS COLLECTION



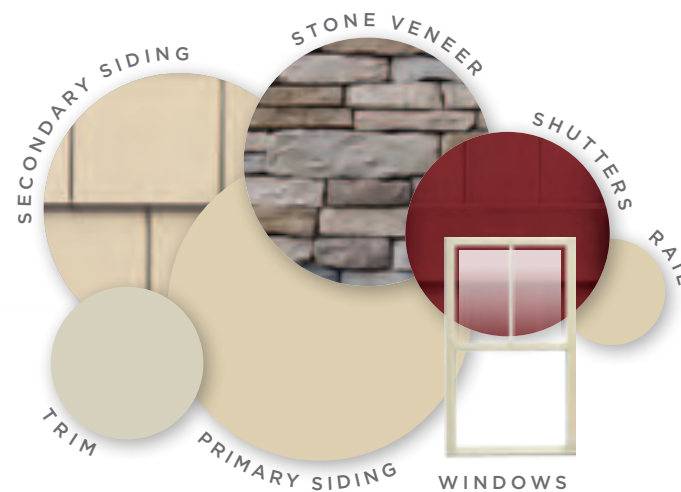


ENHANCE

Converting the large overhang into a functional porch changes this house into a Craftsman style. The newly added dormer on the single-story side helps to give balance to the overall look.

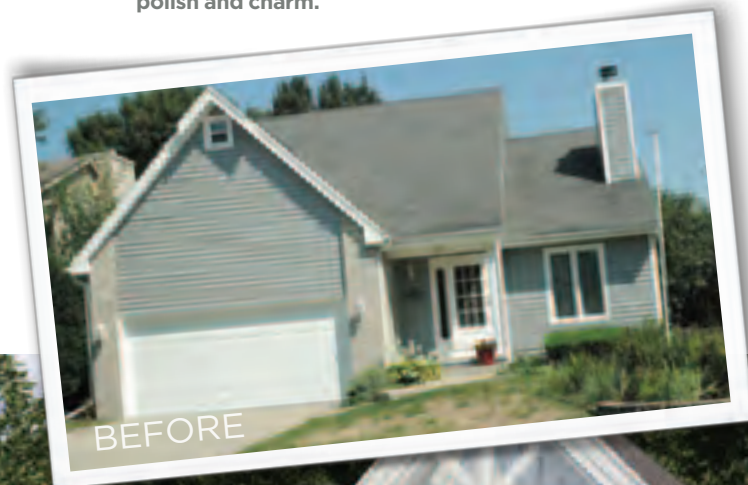
The DAWN

COLLECTION



Refer to the inside back cover for product specs.

This house, with its enormous garage gable, lack of windows and pale color scheme, is missing design elements that will give it polish and charm.



Crafted together, the use of scalloped shingles, brackets on the columns and gable details create a charming Folk Victorian home. The height of the front gable has been camouflaged by the use of a normal-sized window and a mix of siding types.

The GULLWING COLLECTION



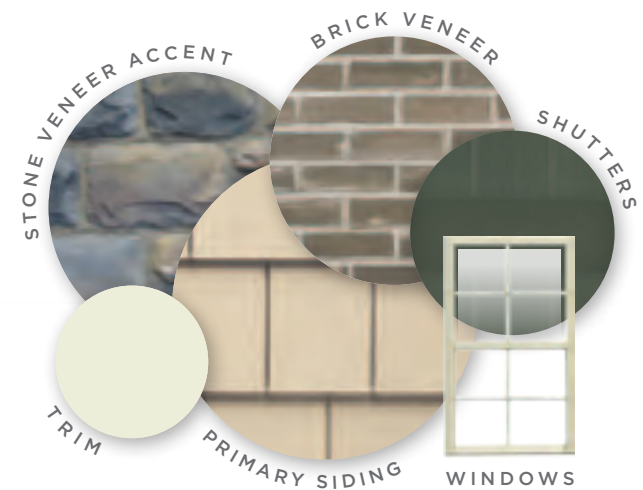


ENHANCE

A lovely French Country home exterior was created through the use of brick, stone and shakes. To lend balance to the oversized gable, a small false dormer was added over the front door.

The SAGE

COLLECTION



This house, with its generous front porch, unfortunately has a bulging garage that puts the focus in the wrong place. The vanilla color palette does not contribute eye appeal.



Newly added stone helps draw attention to the front door while the combination of coordinated textures and materials, such as gable vents, deliver a more balanced look overall.

The MAPLE
COLLECTION



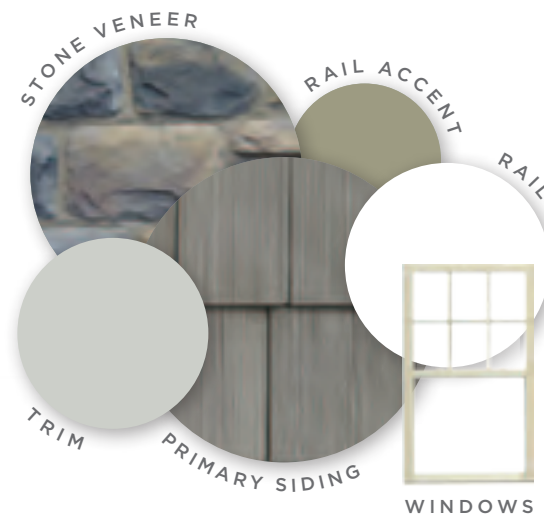


ENHANCE

By over-framing with a second gable featuring a circle window, the location of the front door is highlighted. This enhancement fixes some of the architectural “wrongs” of the original house. Now, through the use of color and contrasting trim, a classic Shingle-style is possible.

The LOREDO

COLLECTION



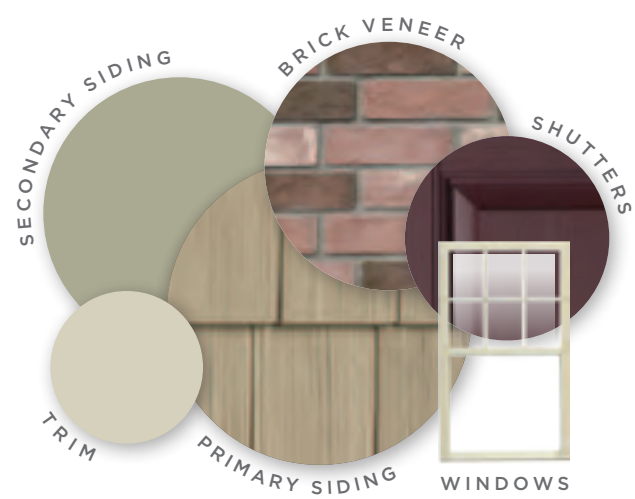
Refer to the inside back cover for product specs.

This 1970s-style house is missing personality and architectural character. The front entry is unprotected and lacks a warm welcome.



New windows, siding and stone veneer have transformed the uninspiring façade in the before photo into a handsome, charming exterior. Architectural features such as the shuttered, divided-lite windows create a stately appearance, while stone veneer and lap siding complete the traditional look of a Colonial.

The **CABIN**
COLLECTION



REFRESH



ENHANCE

Simple structural enhancements can have a dramatic effect. A front porch extends a welcome entry, while a second-story gable breaks up the roofline on this boxy 70s Colonial. Siding materials, windows, shutters and colors work together to create an eye-catching result.

The BRONZE

COLLECTION



You've decided the time is right to update the look of your house. We understand that this is just the first of many choices you'll need to make over the next few weeks. Therefore, as the complete exterior solution, we're here to help simplify the process.

Most homeowners prefer a step-by-step approach and while no two projects are the same, consider the following plan:



1 Decide the **scope**.

- How long do you plan to stay in your home? Short or long term?
- What are your remodeling goals? Increase efficiency? Reduce maintenance? Update the appearance?
- Establish a budget.
- Meet with contractors and select the one you feel most comfortable with.



2 Make your **selections**.

- What do you like or dislike about your house right now?
- Do you have design ideas? Colors you prefer? Styles you love?
- Visit the Design Studio at mastic.com/getstarted. Choose a home like yours and experiment with colors and textures. Create your own wish list and share it with your contractor.
- Consider working with a Dreamhome Professional contractor to transform a photo of your home on screen to see what your project can look like.



3 **Enjoy!**

- Adore the new look and increased curb appeal.
- Experience more time enjoying your home and less time fixing and maintaining it.
- Benefit from increased energy efficiency.

JUST ADD INSPIRATION.



When you're starting on a remodeling project, *The Designed Exterior™* offers everything you need to make your dream home a reality. This complete exterior solution allows you to create a beautiful, low-maintenance and distinctively custom-looking home exterior.





SINGLE STORY HOMES PRODUCT SPECS

HOME NO.

REFRESH

HOME 1

the **FERN** COLLECTION

PAGE 16

PRIMARY SIDING	Quest® D5 - Scottish Thistle
SECONDARY SIDING	-
ACCENTS	Trim - Almond / Raised Panel Shutters - Winestone
REPLACEMENT WINDOWS	5000 Series - Double Hung Windows - White
STONE	-
FENCE+RAIL	-
GUTTER	Gutter - Almond

HOME 2

the **RIVERSTONE** COLLECTION

PAGE 18

PRIMARY SIDING	Quest® D4 - Pebblestone Clay
SECONDARY SIDING	-
ACCENTS	Fascia, Soffit and Trim Sheet - Almond
REPLACEMENT WINDOWS	5000 Series - Double Hung & Picture Windows - Beige
STONE	Ply Gem Stone Shadow LedgeStone - Easton
FENCE+RAIL	Kroy® Solid Privacy Fence - Redwood
GUTTER	Gutter - Almond

HOME 3

the **SANTA FE** COLLECTION

PAGE 20

PRIMARY SIDING	Ovation™ T3 - Pebblestone Clay
SECONDARY SIDING	Quest® D4 - Russet Red
ACCENTS	Fascia, Soffit and Trim Sheet - Desert Sand
REPLACEMENT WINDOWS	5000 Series - Casement & Picture Windows - Beige
STONE	-
FENCE+RAIL	-
GUTTER	Gutter - Desert Sand

HOME 4

the **STRAW** COLLECTION

PAGE 22

PRIMARY SIDING	Cedar Discovery® Perfection D7 - Cameo
SECONDARY SIDING	Quest® D4 - American Walnut / Pro-Select® D5 Vertical Siding - American Walnut
ACCENTS	Fascia, Soffit and Trim Sheet - Almond
REPLACEMENT WINDOWS	5000 Series - Double Hung & Picture Windows - Beige
STONE	-
FENCE+RAIL	-
GUTTER	Gutter - Almond

HOME 5

the **FIELDGRASS** COLLECTION

PAGE 24

PRIMARY SIDING	Quest® D4 - Tuscan Olive
SECONDARY SIDING	Board+Batten Designer Series™ - Almond
ACCENTS	Fascia, Soffit and Trim Sheet - Cameo
REPLACEMENT WINDOWS	5000 Series - Architectural Shape Windows - White
STONE	Ply Gem Stone Shadow LedgeStone - Lehighton
FENCE+RAIL	-
GUTTER	Gutter - Cameo

HOME 6

the **LINCOLNTON** COLLECTION

PAGE 26

PRIMARY SIDING	Quest® D4 - Rugged Canyon
SECONDARY SIDING	Carvedwood® 44® T3 - Pebblestone Clay
ACCENTS	Fascia, Soffit and Trim Sheet - White / Louvered Shutters - Black
REPLACEMENT WINDOWS	5000 Series - Double Hung & Picture Windows - Dark Bronze
STONE	Ply Gem Stone Brick - Fulton Colonial
FENCE+RAIL	Kroy® Contour Rail - White
GUTTER	Gutter - White

HOME 7

the **WEDGEWOOD** COLLECTION

PAGE 28

PRIMARY SIDING	Cedar Discovery® Perfection D7 - Harbor Grey
SECONDARY SIDING	Structure® D6 - Wicker
ACCENTS	Fascia, Soffit and Trim Sheet - White / Rectangle Gable Vents - White
REPLACEMENT WINDOWS	5000 Series - Double Hung Windows - White
STONE	Ply Gem Stone Brick - Fulton Colonial / Shadow LedgeStone - Shade Mountain
FENCE+RAIL	-
GUTTER	Gutter - White

HOME 8

the **FAWN** COLLECTION

PAGE 30

PRIMARY SIDING	Quest® D4 - Wicker
SECONDARY SIDING	Cedar Discovery® Perfection D7 - Pebblestone Clay
ACCENTS	Fascia, Soffit and Trim Sheet - Wicker
REPLACEMENT WINDOWS	5000 Series - Double Hung Windows - Beige
STONE	Ply Gem Stone Ridgestone - Chardonnay
FENCE+RAIL	-
GUTTER	Gutter - Wicker

ENHANCED

the **HILLTOP** COLLECTION

PAGE 17

Quest® D5 - Pebblestone Clay
Cedar Discovery® Perfection D7 - Russet Red
Trim Sheet - Rugged Canyon
5000 Series - Double Hung Windows - Beige
Ply Gem Stone Ridgestone - Shade Mountain
Kroy® Standard Rail - Khaki
Gutter - Rugged Canyon

the **UNIVERSITY** COLLECTION

PAGE 19

Quest® D4 - Wicker
-
Fascia, Soffit and Trim Sheet - Cameo
5000 Series - Casement Windows - White
Ply Gem Stone Brick - Clarion Colonial
Kroy® Solid Privacy Fence - Redwood
Gutter - Cameo

the **REED** COLLECTION

PAGE 21

Cedar Discovery® Perfection D7 - Pebblestone Clay
Board+Batten Designer Series™ - Almond
Fascia, Soffit and Trim Sheet - Wicker
5000 Series - Double Hung Windows - Beige
Ply Gem Stone Shadow LedgeStone - Bradford
Kroy® Over-The-Top - Sandstone
Gutter - Wicker

the **WASHINGTON** COLLECTION

PAGE 23

Mastic Quest® D5 - Classic Cream
-
Fascia, Soffit and Trim Sheet - White / Raised Panel Shutters - Black
5000 Series - Double Hung Windows - White
Ply Gem Stone Brick - Fulton Colonial
Kroy® T-Rail - White
Gutter - White

the **LAKESIDE** COLLECTION

PAGE 25

Ovation™ T3 - Pebblestone Clay
Cedar Discovery® Perfection D7 - Russet Red
Fascia, Soffit and Trim Sheet - Cameo
5000 Series - Architectural Shape Windows - White
Ply Gem Stone Ridgestone - Chardonnay
-
Gutter - Cameo

the **REDWOOD** COLLECTION

PAGE 27

Quest® D4 - Classic Cream
Cedar Discovery® Hand-Split Shake - Cedar
Fascia, Soffit and Trim Sheet - White
5000 Series - Double Hung & Picture Windows - Dark Bronze
Ply Gem Stone Cut Cobblestone - Winfield
Kroy® Standard Rail - White
Gutter - White

the **CAPE MAY** COLLECTION

PAGE 29

Structure® D6 - Harbor Grey
Cedar Discovery® Half-Round - Classic Cream
Fascia, Soffit and Trim Sheet - White / Rectangle Gable Vents - Painted Winestone / Louvered Shutters - Winestone
5000 Series - Double Hung Windows - White
Ply Gem Stone Brick - Chester Colonial
-
Gutter - White

the **VISTA** COLLECTION

PAGE 31

Cedar Discovery® Half-Split Shake - Russet Red
Quest® D5 - Rugged Canyon / Board+Batten Designer Series™ - Rugged Canyon
Fascia, Soffit and Trim Sheet - Wicker
5000 Series - Double Hung Windows - Beige
Ply Gem Stone Ridgestone - Buckingham
Kroy® T-Rail - Khaki
Gutter - Wicker



SPLIT-LEVEL HOMES PRODUCT SPECS

HOME NO.

REFRESH

HOME 9	the EMBER COLLECTION	PAGE 34
PRIMARY SIDING	Cedar Discovery® Perfection D7 - Russet Red	
SECONDARY SIDING	Structure® D6 - Sandtone / Board+Batten Designer Series™ - Montana Suede	
ACCENTS	Fascia, Soffit and Trim Sheet - Pebblestone Clay	
REPLACEMENT WINDOWS	5000 Series - Casement, Double Hung & Picture Windows - Beige	
STONE	-	
FENCE+RAIL	-	
GUTTER	Gutter - Pebblestone Clay	
HOME 10	the STUDIO COLLECTION	PAGE 36
PRIMARY SIDING	Quest® D4 - Everest	
SECONDARY SIDING	Board+Batten Designer Series™ - Classic Cream	
ACCENTS	Fascia, Soffit and Trim Sheet - Wicker	
REPLACEMENT WINDOWS	5000 Series - Casement & Picture Windows - Beige	
STONE	Ply Gem Stone Brick - Clarion Colonial	
FENCE+RAIL	-	
GUTTER	Gutter - Wicker	
HOME 11	the SUFFOLK COLLECTION	PAGE 38
PRIMARY SIDING	Quest® D4 - Deep Granite	
SECONDARY SIDING	Ovation™ T3 - Silver Grey	
ACCENTS	Fascia, Soffit and Trim Sheet - Silver Grey / Board and Batten Shutters - Vineyard Red	
REPLACEMENT WINDOWS	5000 Series - Double Hung & Sliding Windows - White	
STONE	Ply Gem Stone Cut Cobblestone - Winfield	
FENCE+RAIL	-	
GUTTER	Gutter - Silver Grey	
HOME 12	the QUEEN ANNE COLLECTION	PAGE 40
PRIMARY SIDING	Quest® D4 - Colonial Yellow	
SECONDARY SIDING	-	
ACCENTS	Fascia, Soffit and Trim Sheet - White / Mantels, Pediments, and Columns - White / Raised Panel Shutters - Black	
REPLACEMENT WINDOWS	5000 Series - Sliding Windows - White	
STONE	Ply Gem Stone Brick - Fulton Colonial	
FENCE+RAIL	Kroy® Rail - White with Custom Design	
GUTTER	Gutter - White	
HOME 13	the ELKHORN COLLECTION	PAGE 42
PRIMARY SIDING	Board+Batten Designer Series™ - Sandtone	
SECONDARY SIDING	Quest® D4 - Natural Cedar	
ACCENTS	Fascia, Soffit and Trim Sheet - Classic Cream	
REPLACEMENT WINDOWS	5000 Series - Casement & Picture Windows - Dark Bronze	
STONE	-	
FENCE+RAIL	-	
GUTTER	Gutter - Cameo	
HOME 14	the SOHO COLLECTION	PAGE 44
PRIMARY SIDING	Board+Batten Designer Series™ - Harbor Grey	
SECONDARY SIDING	Cedar Discovery® Half-Round - Harbor Grey	
ACCENTS	Fascia, Soffit and Trim Sheet - White	
REPLACEMENT WINDOWS	5000 Series - Picture & Architectural Shape Windows - White	
STONE	Ply Gem Stone Brick - Fulton Colonial	
FENCE+RAIL	-	
GUTTER	Gutter - White	

ENHANCED

the BUCKSKIN COLLECTION	PAGE 35
Cedar Discovery® T5 - Pebblestone Clay	
Quest® D4 - Pebblestone Clay	
Fascia, Soffit and Trim Sheet - Cameo / Raised Panel Shutters - Red	
5000 Series - Double Hung Windows - Beige	
Ply Gem Stone Shadow LedgeStone - Chardonnay	
Kroy® Standard Rail - Tan	
Gutter - Cameo	
the MEADOWBROOK COLLECTION	PAGE 37
Quest® D4 - Pebblestone Clay	
-	
Fascia, Soffit and Trim Sheet - Rugged Canyon	
5000 Series - Casement Windows - Sandstone	
Ply Gem Stone Shadow LedgeStone - Chardonnay	
-	
Gutter - Rugged Canyon	
the AUTUMN COLLECTION	PAGE 39
Cedar Discovery® Perfection T5 - Cedar	
-	
Fascia, Soffit and Trim Sheet - White / Board and Batten Shutters - Red	
5000 Series - Casement, Sliding & Picture Windows - Beige	
Ply Gem Stone Shadow LedgeStone - Shade Mountain	
-	
Gutter - White	
the SUNSET COLLECTION	PAGE 41
Quest® D4 - Woodland Green	
Cedar Discovery® Perfection D7 - Russet Red / Pro-Select® D5 Vertical Siding - Wicker	
Fascia, Soffit and Trim Sheet - Wicker	
-	
Ply Gem Stone Shadow LedgeStone - Chardonnay	
Kroy® Standard Rail - Khaki	
Gutter - Wicker	
the PINE COLLECTION	PAGE 43
Quest® D5 - Scottish Thistle / Board+Batten Designer Series™ - Scottish Thistle	
Cedar Discovery® Hand-Split Shake - Cedar	
Fascia, Soffit and Trim Sheet - White	
-	
Ply Gem Stone Shadow LedgeStone - Easton	
Kroy® Contour Rail - White with Custom Post	
Gutter - White	
the LODGE COLLECTION	PAGE 45
Cedar Discovery® Perfection D7 - Pebblestone Clay	
Board+Batten Designer Series™ - Pebblestone Clay / Quest® D4 - Pebblestone Clay	
Fascia, Soffit and Trim Sheet - Pebblestone Clay / Board and Batten Shutters - Spanish Moss	
5000 Series - Awning, Picture & Architectural Shape Windows - Sandstone	
Ply Gem Stone Tuscan Fieldstone - Shenandoah	
-	
Gutter - Pebblestone Clay	

*The products listed in this field guide are approximations of colors and styles represented in the renderings. Consult the *Mastic Specification Guide* and product color samples for actual product specifications.



TWO STORY HOMES PRODUCT SPECS

HOME NO.	REFRESH	ENHANCED
HOME 15	the SLATE COLLECTION PAGE 48	the DEER VALLEY COLLECTION PAGE 49
PRIMARY SIDING	Quest® D4 - Woodland Green	Cedar Discovery® Perfection T5 - Montana Suede
SECONDARY SIDING	Cedar Discovery® Perfection T5 - Pebblestone Clay	-
ACCENTS	Fascia, Soffit and Trim Sheet - Cameo	Fascia, Soffit and Trim Sheet - White / Perfect Corners - Montana Suede
REPLACEMENT WINDOWS	5000 Series - Double Hung, Sliding, Casement & Architectural Shape Windows - White	5000 Series - Double Hung, Casement & Picture Windows - White
STONE	-	Ply Gem Stone Shadow LedgeStone - Shade Mountain
FENCE+RAIL	Kroy® Standard Rail - White / Solid Privacy Fence - Woodland Select Weathered Cedar	Kroy® Standard Rail - White / Solid Privacy Woodland Select - Natural Cedar
GUTTER	Gutter - Cameo	Gutter - White
HOME 16	the TELLURIDE COLLECTION PAGE 50	the GRANITE COLLECTION PAGE 51
PRIMARY SIDING	Quest® D4 - Montana Suede	Cedar Discovery® Perfection D7 - Quiet Willow / Quest® D5 - Scottish Thistle
SECONDARY SIDING	Board+Batten Designer Series™ - Sandtone	Board+Batten Designer Series™ - Scottish Thistle
ACCENTS	Fascia, Soffit and Trim Sheet - Rugged Canyon / Board and Batten Shutters - Brown	Fascia, Soffit and Trim Sheet - Desert Sand
REPLACEMENT WINDOWS	5000 Series - Casement & Picture Windows - Dark Bronze	-
STONE	Ply Gem Stone Shadow LedgeStone - Chardonnay	Ply Gem Stone Shadow LedgeStone - Easton
FENCE+RAIL	-	Kroy® Standard Rail - White
GUTTER	Gutter - Rugged Canyon	Gutter - Desert Sand
HOME 17	the ADAMS COLLECTION PAGE 52	the SANDSTONE COLLECTION PAGE 53
PRIMARY SIDING	Quest® D4 - Russet Red	Cedar Discovery® Perfection D7 - Sandtone
SECONDARY SIDING	-	Quest® D4 - Montana Suede
ACCENTS	Fascia, Soffit and Trim Sheet - White / Window & Garage Mantels - White	Fascia, Soffit and Trim Sheet - Desert Sand / Board and Batten Shutters - Dark Berry / Monticello® Columns - White
REPLACEMENT WINDOWS	5000 Series - Double Hung Windows - White	5000 Series - Double Hung Windows - White
STONE	Ply Gem Stone Brick - Monroe Colonial	Ply Gem Stone Shadow LedgeStone - Bradford
FENCE+RAIL	-	Kroy® Standard Rail - White
GUTTER	Gutter - White	Gutter - Desert Sand
HOME 18	the STAINLESS COLLECTION PAGE 54	the PEWTER COLLECTION PAGE 55
PRIMARY SIDING	Structure® Home Insulation System™ D6 - Silver Grey	Board+Batten Designer Series™ - Harbor Grey
SECONDARY SIDING	Ovation™ T3 - Almond	Quest® D4 - Deep Granite
ACCENTS	Fascia, Soffit and Trim Sheet - Cameo	Fascia, Soffit and Trim Sheet - White / Board and Batten Shutters - Black
REPLACEMENT WINDOWS	5000 Series - Casement & Picture Windows - Sandstone	5000 Series - Double Hung Windows - White
STONE	Ply Gem Stone Brick - Clarion Colonial	Ply Gem Stone Cut Cobblestone - Winfield
FENCE+RAIL	-	-
GUTTER	Gutter - Cameo	Gutter - White
HOME 19	the SAN ANDREAS COLLECTION PAGE 56	the DAWN COLLECTION PAGE 57
PRIMARY SIDING	Cedar Discovery® Perfection D7 - Victorian Grey	Quest® D5 - Sandtone / Board+Batten Designer Series™ - Sandtone
SECONDARY SIDING	Quest® D5 - Harbor Grey	Cedar Discovery® Perfection D7 - Sandtone
ACCENTS	Fascia, Soffit and Trim Sheet - Cameo	Fascia, Soffit and Trim Sheet - Wicker / Board and Batten Shutters - Red
REPLACEMENT WINDOWS	5000 Series - Double Hung & Picture Windows - Dark Bronze	5000 Series - Double Hung Windows - Beige
STONE	Ply Gem Stone Cobblestone - Shade Mountain	Ply Gem Stone Shadow LedgeStone - Bradford
FENCE+RAIL	-	Kroy® Contour Rail - Khaki with Custom Post
GUTTER	Gutter - Cameo	Gutter - Wicker
HOME 20	the GULLWING COLLECTION PAGE 58	the SAGE COLLECTION PAGE 59
PRIMARY SIDING	Quest® D5 - Pebblestone Clay	Cedar Discovery® D7 - Sandtone
SECONDARY SIDING	Cedar Discovery® Half-Rounds - Victorian Grey / Board+Batten Designer Series™ - White	-
ACCENTS	Fascia, Soffit and Trim Sheet - White / Raised Panel Shutters - Dark Spruce	Fascia, Soffit and Trim Sheet - Almond, / Board and Batten Shutters - Spanish Moss
REPLACEMENT WINDOWS	5000 Series - Casement & Picture Windows - White	5000 Series - Casement, Double Hung & Picture Windows - Beige
STONE	Ply Gem Stone Brick - Chester Colonial	Ply Gem Stone Brick - Clarion Colonial / Cut Cobblestone - Winfield
FENCE+RAIL	-	-
GUTTER	Gutter - White	Gutter - Almond
HOME 21	the MAPLE COLLECTION PAGE 60	the LOREDO COLLECTION PAGE 61
PRIMARY SIDING	Quest® D4 - Pebblestone Clay	Cedar Discovery® D7 - Cape Grey
SECONDARY SIDING	Cedar Discovery® Perfection D7 - Timber	-
ACCENTS	Fascia, Soffit and Trim Sheet - White	Fascia, Soffit and Trim Sheet - Silver Grey / Garage Mantel - Painted to Match Silver Grey
REPLACEMENT WINDOWS	5000 Series - Casement & Picture Windows - Beige	5000 Series - Double Hung & Architectural Shape Windows - Beige
STONE	Ply Gem Stone Brick - Clarion Colonial / LedgeStone - Chardonnay	Ply Gem Stone Cut Cobblestone - Winfield
FENCE+RAIL	Kroy® T-Rail with Custom Post - White	-
GUTTER	Gutter - White	Gutter - Silver Grey
HOME 22	the CABIN COLLECTION PAGE 62	the BRONZE COLLECTION PAGE 63
PRIMARY SIDING	Cedar Discovery® Perfection D7 - Pebblestone Clay	Cedar Discovery® Perfection D7 - Deep Granite
SECONDARY SIDING	Quest® D5 - Pebblestone Clay	-
ACCENTS	Fascia, Soffit and Trim Sheet - Wicker / Raised Panel Shutters - Winestone	Fascia, Soffit and Trim Sheet - White / Raised Panel Shutters - Winestone / Perfect Corners - Deep Granite
REPLACEMENT WINDOWS	5000 Series - Double Hung Windows - Beige	5000 Series - Double Hung & Architectural Shape Windows - White
STONE	Ply Gem Stone Brick - Fulton Colonial	Ply Gem Stone Shadow LedgeStone - Shade Mountain
FENCE+RAIL	-	-
GUTTER	Gutter - Wicker	Gutter - White

DETAILED IMPRESSION.

The Designed Exterior™ by Ply Gem combines eye-catching colors and textures — intended to work together — to deliver a distinctively custom home exterior that will reflect your personal sense of style.

Start creating your own curb appeal by visiting the Design Studio at mastic.com.

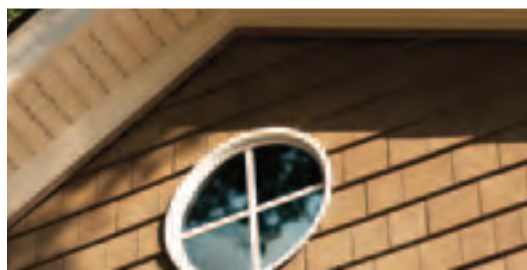
There's no time like the present to begin planning.

Using *The Designed Exterior* by Ply Gem, you can explore the possibilities and beautifully transform your ideas and goals into the home you've always dreamed of.

Visit mastic.com/getstarted



THE DESIGNED EXTERIOR



MASTIC
HOME EXTERIORS
by PLY GEM



When you choose building products for your home, you want them to last. Just as important, you want the company that stands behind those products to be there when you need them. With Mastic, you can choose with confidence. Every product meets strict quality standards and is backed by Ply Gem, an industry leader with a long-standing record of integrity. Residential builders, remodelers and architects have put their trust in Ply Gem for over 65 years.

Mastic Home Exteriors. This is the Exterior Solution.®

2600 Grand Blvd, Suite 900

Kansas City, Missouri 64108

1-800-962-6973

MASTIC.COM

Ply Gem reserves the right to alter, modify or delete items from time to time without notice. Due to printing limitations, colors may not be exactly as shown. Contact your distributor or sales representative for actual product and color samples.

Mastic, Mastic Home Exteriors, the Mastic Home Exteriors logo and the "Mastic Home Exteriors. This is the Exterior Solution." slogan are trademarks of Mastic Home Exteriors, Inc. Ply Gem is a trademark of Ply Gem Industries, Inc. © 2012 Mastic Home Exteriors.

All products made in the U.S.A.

7605129991102/BT/CG/0812



Printed with environmentally sensitive vegetable based inks.



 SIDING + ACCESSORIES

 WINDOWS

 STONE VENEER

 FENCE + RAIL

 **PLY GEM**
BUILDING PRODUCTS. BUILDING SUCCESS.